



**MATTHEW CONSTANTINE**  
DIRECTOR

# **EMERGENCY MEDICAL SERVICES SYSTEM COLLABORATIVE MEETING**

**Thursday  
December 1, 2016**





KERN COUNTY  
**Public Health Services**  
DEPARTMENT

**MATTHEW CONSTANTINE**  
DIRECTOR



# **INTRODUCTIONS**

## Agenda - EMS System Collaborative

### 2:00 PM Thursday, December 1<sup>st</sup>, 2016

Public Health Office, San Joaquin Room, 1800 Mt. Vernon Ave., Bakersfield



	What	Who	Why	Time*
1	Introductions/Welcome	Jana Richardson	Participant familiarization	2 min.
2	STEMI QI Update	Jeff Fariss	Review of past quarter's STEMI QI Committee	5 min.
3	TEC Update	James Cox	Review of past month's Trauma Evaluation Committee and Core Measures	10 min.
4	ReddiNet and use of MCI Module	Jeff Fariss	Review of previous months' performance of the ReddiNet system and compliance by organizations	10 min.
5	Ambulance Destination Decision Policies and Procedures	Jana Richardson	Reminder of public comment period	2 min.
6	Patient Care Report Policies	Jeff Fariss	Reminder of public comment period	2 min.
7	Burn Center Designation	Jana Richardson	Review of comments. Announce final 15 day public comment period	10 min.
8	Pediatric Advisory Committee	George Baker	Review PAC membership and how to join.	2 min.
9	Announcements	All	Participant and Staff Updates	5 min.
<p>* Time listed is only an approximation; actual time for discussion may be sooner or longer than minutes shown; meeting may go until 5:00 PM, depending upon on nature and depth of discussion.</p>				

# STEMI QI

- November 15<sup>th</sup>
- Reviewed quarterly data
- Run Review by BHH
- Dr. Lee requested contact be made with Mission lifeline to better define several data elements

# QI Meetings 2017

- All QI Meetings, with exception of TEC, have been moved to same day each quarter.
- Will be held at Public Health in San Joaquin Room

# QI Meetings 2017

- Next QI Meeting Date is March 16th, 2017 with the following meeting schedule:
  - 0830 EMD QI Committee
  - 0930 STEMI QI Committee
  - 1030 STROKE QI Committee
  - 1330 TEC QI Committee
  - 1430 PEDIATRIC QI Committee
  - 1530 GENERAL QI Committee

## Agenda - EMS System Collaborative

### 2:00 PM Thursday, December 1<sup>st</sup>, 2016

Public Health Office, San Joaquin Room, 1800 Mt. Vernon Ave., Bakersfield



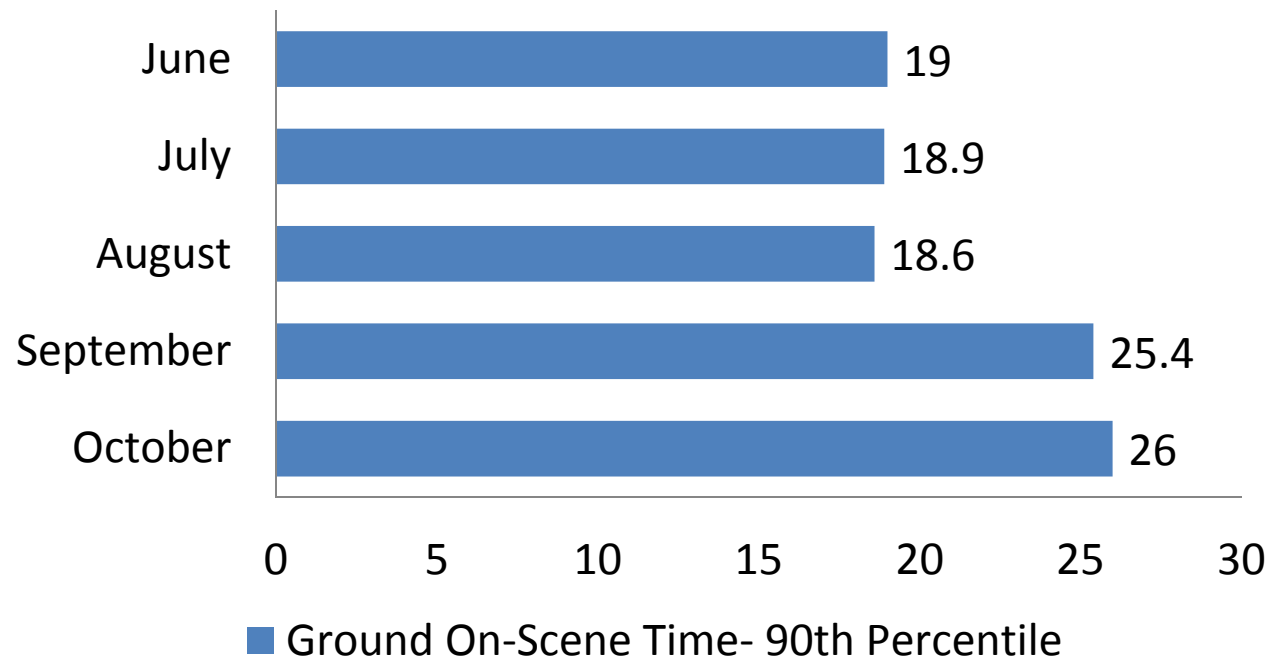
	What	Who	Why	Time*
1	Introductions/Welcome	Jana Richardson	Participant familiarization	2 min.
2	STEMI QI Update	Jeff Fariss	Review of past quarter's STEMI QI Committee	5 min.
3	TEC Update	James Cox	Review of past month's Trauma Evaluation Committee and Core Measures	10 min.
4	ReddiNet and use of MCI Module	Jeff Fariss	Review of previous months' performance of the ReddiNet system and compliance by organizations	10 min.
5	Ambulance Destination Decision Policies and Procedures	Jana Richardson	Reminder of public comment period	2 min.
6	Patient Care Report Policies	Jeff Fariss	Reminder of public comment period	2 min.
7	Burn Center Designation	Jana Richardson	Review of comments. Announce final 15 day public comment period	10 min.
8	Pediatric Advisory Committee	George Baker	Review PAC membership and how to join.	2 min.
9	Announcements	All	Participant and Staff Updates	5 min.
<p>* Time listed is only an approximation; actual time for discussion may be sooner or longer than minutes shown; meeting may go until 5:00 PM, depending upon on nature and depth of discussion.</p>				

# Trauma Evaluation Committee

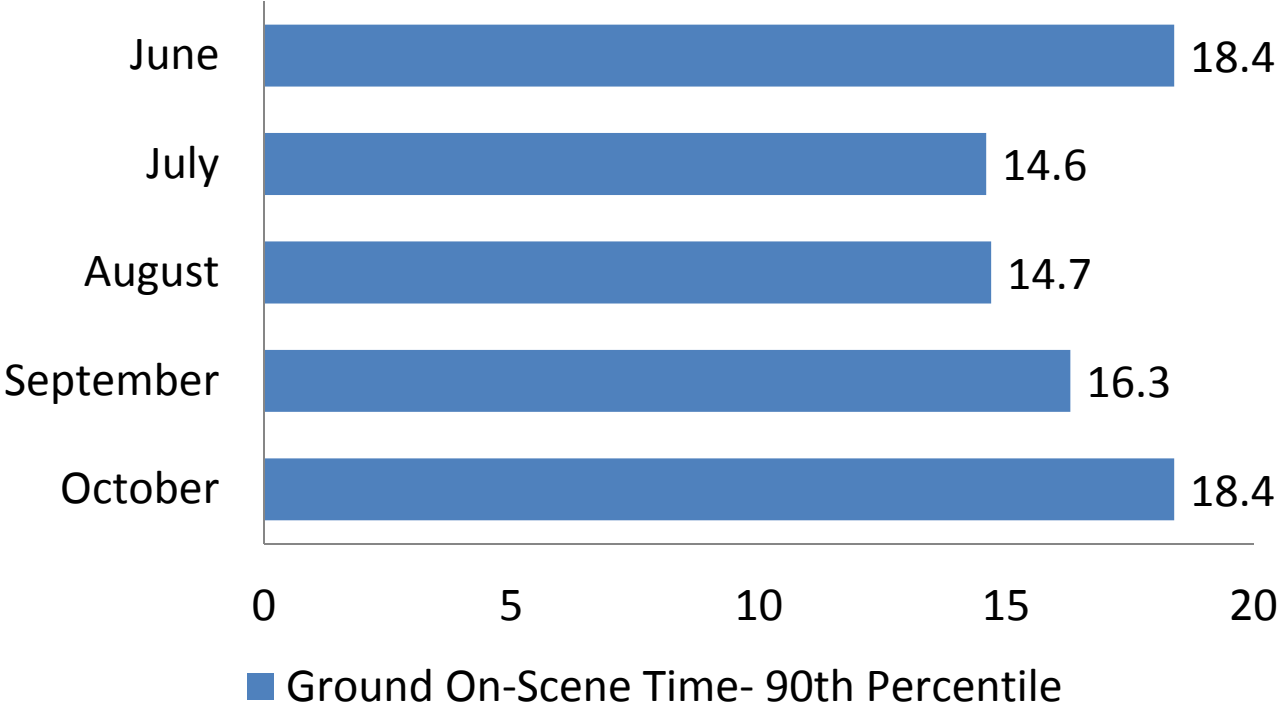
November 16<sup>th</sup> 2016



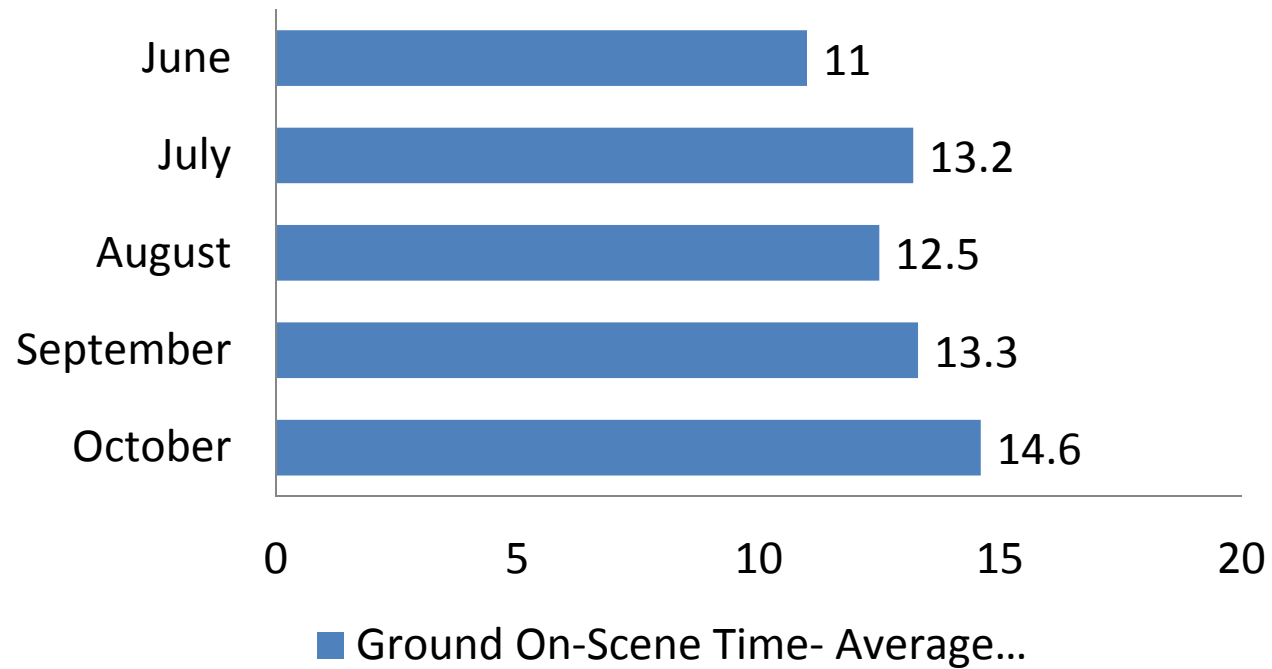
# Core Measures- State



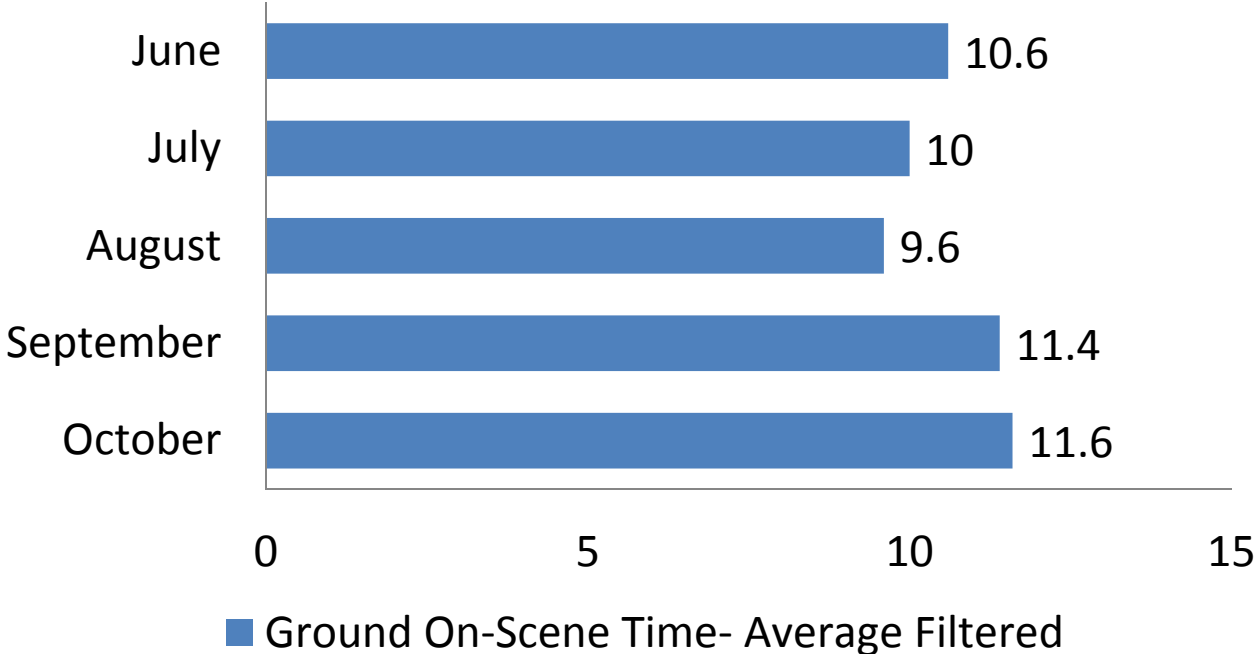
# Core Measure- Kern County



# Core Measures- Kern County



# Core Measure- Kern County

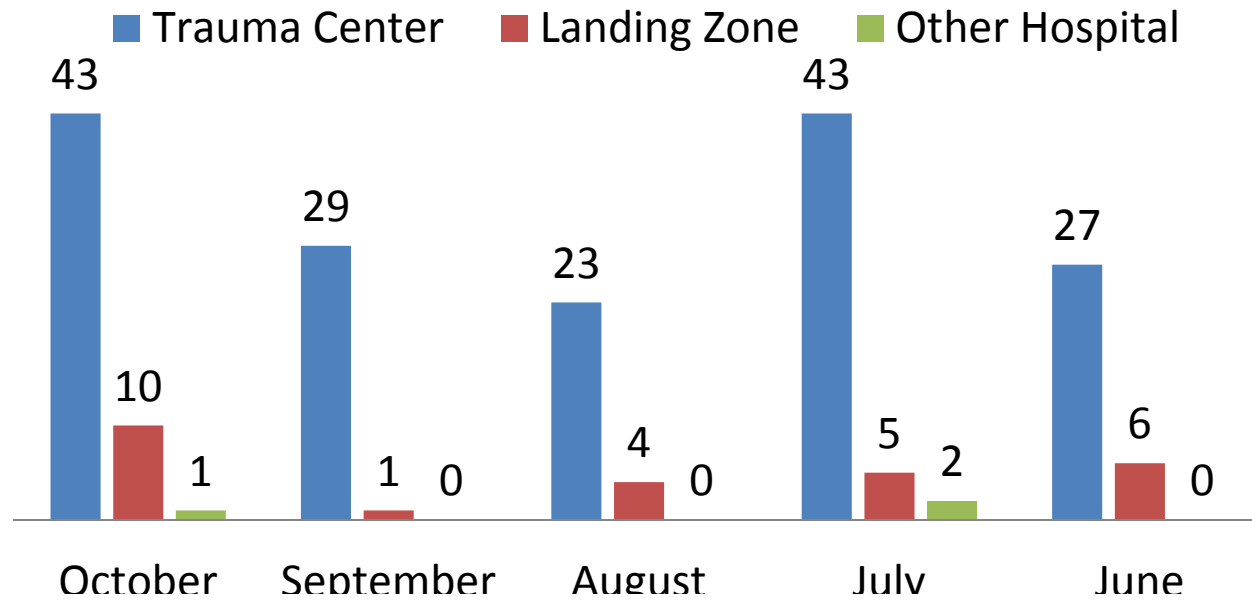


## Core Measures

<u>Reported Delay</u>	<u>October</u>	<u>September</u>	<u>August</u>	<u>July</u>	<u>June</u>
None- Under 10 Min	14	11	9	21	13
None- Over 10 Min	15	8	7	12	12
Other- Description	9	8	4	6	1
Other- No Description	2	0	0	0	0
Safety/Crowd/Staff	0	2	3	4	0
Language Barrier	0	0	0	0	0
Extrication >20min	3	0	0	0	0
Distance/Vehicle Crash	0	0	0	0	1
Other Hospital	0	0	0	2	0
Reporting Error	1	0	0	0	0
Extremis	0	0	0	0	0
<b>Calls Over 10 min</b>	<b>30(68%)</b>	<b>18(62%)</b>	<b>13(56%)</b>	<b>24(53%)</b>	<b>14(51%)</b>
<b>Total Calls</b>	<b>44</b>	<b>29</b>	<b>23</b>	<b>45</b>	<b>27</b>

# Direct to Trauma Center

## Direct to Trauma Center from Scene



# Trauma Evaluation Committee

- December meeting canceled
- Next meeting-
  - January 18th 2017
  - Meeting begins at 1400Hrs.
  - Public Health Building- Mojave Conference Room

## Agenda - EMS System Collaborative

### 2:00 PM Thursday, December 1<sup>st</sup>, 2016

Public Health Office, San Joaquin Room, 1800 Mt. Vernon Ave., Bakersfield

	What	Who	Why	Time*
1	Introductions/Welcome	Jana Richardson	Participant familiarization	2 min.
2	STEMI QI Update	Jeff Fariss	Review of past quarter's STEMI QI Committee	5 min.
3	TEC Update	James Cox	Review of past month's Trauma Evaluation Committee and Core Measures	10 min.
4	ReddiNet and use of MCI Module	Jeff Fariss	Review of previous months' performance of the ReddiNet system and compliance by organizations	10 min.
5	Ambulance Destination Decision Policies and Procedures	Jana Richardson	Reminder of public comment period	2 min.
6	Patient Care Report Policies	Jeff Fariss	Reminder of public comment period	2 min.
7	Burn Center Designation	Jana Richardson	Review of comments. Announce final 15 day public comment period	10 min.
8	Pediatric Advisory Committee	George Baker	Review PAC membership and how to join.	2 min.
9	Announcements	All	Participant and Staff Updates	5 min.
<p>* Time listed is only an approximation; actual time for discussion may be sooner or longer than minutes shown; meeting may go until 5:00 PM, depending upon on nature and depth of discussion.</p>				





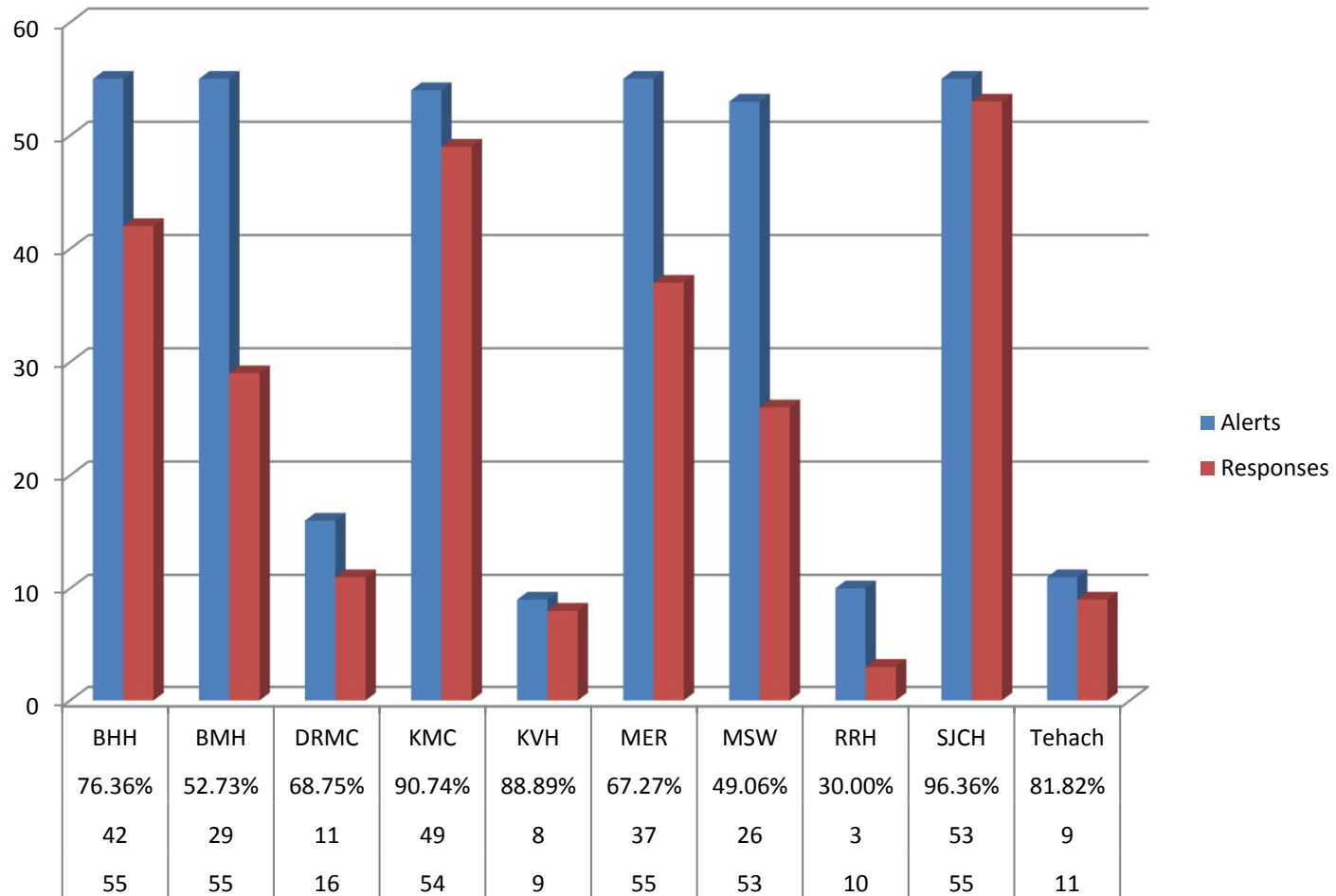
# ReddiNet

Bed Availability / MCI Response

# MCI Response

November		
	Alerts	Responses
BHH	4	3
BMH	4	3
DRMC	2	2
KMC	4	4
KVH	3	3
MER	4	2
MSW	3	2
RRH	2	0
SJCH	4	4
Tehach	2	2

## Year To Date



# Patient Distribution

	Pt Dist				
	I	D	M	Total	
BHH	1	0	0	1	0.52%
BMH	0	0	31	31	16.23%
DRMC	0	2	6	8	4.19%
KMC	14	12	72	98	51.31%
KVH	0	0	0	0	0.00%
MER	1	1	4	6	3.14%
MSW	0	0	9	9	4.71%
RRH	0	4	0	4	2.09%
SJCH	0	0	19	19	9.95%
Tehach	0	0	15	15	7.85%
			Total	191	

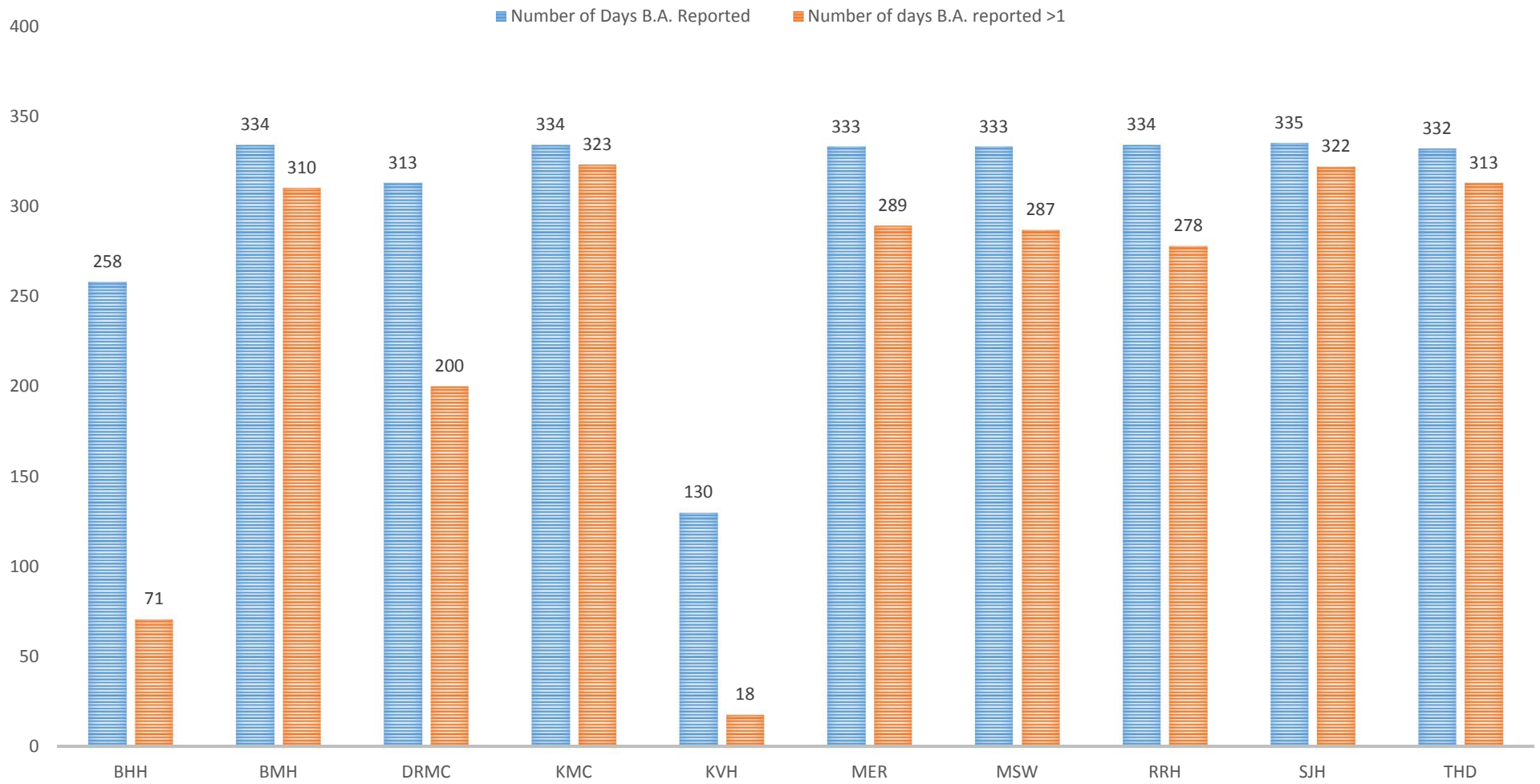
# Bed Availability

## Bed Availability Reporting

November		Number of Days B.A. Reported	Number of Days B.A. not reported	Number of Days B.A. reported >1
	BHH	20	10	1
	BMH	29	1	27
	DRMC	29	1	23
	KMC	30	0	27
	KVH	16	14	0
	MER	29	1	24
	MSW	29	1	24
	RRH	30	0	23
	SJH	30	0	29
	THD	30	0	28



# 2016



## Agenda - EMS System Collaborative

### 2:00 PM Thursday, December 1<sup>st</sup>, 2016

Public Health Office, San Joaquin Room, 1800 Mt. Vernon Ave., Bakersfield

	What	Who	Why	Time*
1	Introductions/Welcome	Jana Richardson	Participant familiarization	2 min.
2	STEMI QI Update	Jeff Fariss	Review of past quarter's STEMI QI Committee	5 min.
3	TEC Update	James Cox	Review of past month's Trauma Evaluation Committee and Core Measures	10 min.
4	ReddiNet and use of MCI Module	Jeff Fariss	Review of previous months' performance of the ReddiNet system and compliance by organizations	10 min.
5	Ambulance Destination Decision Policies and Procedures	Jana Richardson	Reminder of public comment period	2 min.
6	Patient Care Report Policies	Jeff Fariss	Reminder of public comment period	2 min.
7	Burn Center Designation	Jana Richardson	Review of comments. Announce final 15 day public comment period	10 min.
8	Pediatric Advisory Committee	George Baker	Review PAC membership and how to join.	2 min.
9	Announcements	All	Participant and Staff Updates	5 min.
<p>* Time listed is only an approximation; actual time for discussion may be sooner or longer than minutes shown; meeting may go until 5:00 PM, depending upon on nature and depth of discussion.</p>				



## Agenda - EMS System Collaborative

### 2:00 PM Thursday, December 1<sup>st</sup>, 2016

Public Health Office, San Joaquin Room, 1800 Mt. Vernon Ave., Bakersfield

	What	Who	Why	Time*
1	Introductions/Welcome	Jana Richardson	Participant familiarization	2 min.
2	STEMI QI Update	Jeff Fariss	Review of past quarter's STEMI QI Committee	5 min.
3	TEC Update	James Cox	Review of past month's Trauma Evaluation Committee and Core Measures	10 min.
4	ReddiNet and use of MCI Module	Jeff Fariss	Review of previous months' performance of the ReddiNet system and compliance by organizations	10 min.
5	Ambulance Destination Decision Policies and Procedures	Jana Richardson	Reminder of public comment period	2 min.
6	Patient Care Report Policies	Jeff Fariss	Reminder of public comment period	2 min.
7	Burn Center Designation	Jana Richardson	Review of comments. Announce final 15 day public comment period	10 min.
8	Pediatric Advisory Committee	George Baker	Review PAC membership and how to join.	2 min.
9	Announcements	All	Participant and Staff Updates	5 min.
<p>* Time listed is only an approximation; actual time for discussion may be sooner or longer than minutes shown; meeting may go until 5:00 PM, depending upon on nature and depth of discussion.</p>				



# ePCR Policy

- No public comments received to date
- Public Comment closes December 4<sup>th</sup>
- Schematron distribution has begun
  - Please remember that you must submit your demographic data prior to submitting ems data

## Agenda - EMS System Collaborative

### 2:00 PM Thursday, December 1<sup>st</sup>, 2016

Public Health Office, San Joaquin Room, 1800 Mt. Vernon Ave., Bakersfield

	What	Who	Why	Time*
1	Introductions/Welcome	Jana Richardson	Participant familiarization	2 min.
2	STEMI QI Update	Jeff Fariss	Review of past quarter's STEMI QI Committee	5 min.
3	TEC Update	James Cox	Review of past month's Trauma Evaluation Committee and Core Measures	10 min.
4	ReddiNet and use of MCI Module	Jeff Fariss	Review of previous months' performance of the ReddiNet system and compliance by organizations	10 min.
5	Ambulance Destination Decision Policies and Procedures	Jana Richardson	Reminder of public comment period	2 min.
6	Patient Care Report Policies	Jeff Fariss	Reminder of public comment period	2 min.
7	Burn Center Designation	Jana Richardson	Review of comments. Announce final 15 day public comment period	10 min.
8	Pediatric Advisory Committee	George Baker	Review PAC membership and how to join.	2 min.
9	Announcements	All	Participant and Staff Updates	5 min.
<p>* Time listed is only an approximation; actual time for discussion may be sooner or longer than minutes shown; meeting may go until 5:00 PM, depending upon on nature and depth of discussion.</p>				



# Burn Center Designation

# 2<sup>nd</sup> Pubic Comment Period

- Receive ABA Burn Verification within first three years
  - Maintain verification to maintain local designation
- Outlined physician training with more detail
  - One year fellowship training in burn treatment and/or two years' experience in caring for burns within previous five years
  - Board certified in plastic or general surgeon
- Step 3 Trauma Criteria with burns consult for destination
- Chemical burns greater than 5% TBSA. Transport times greater than 60 minutes, may consult with Burn Center for consideration of closest destination.

# Final Public Comment Period

- 15 day Final Public Comment Period
- December 1- December 15
- Submit comments on the public comment table to Jana Richardson.
- EMCAB in February 2017



## Agenda - EMS System Collaborative

### 2:00 PM Thursday, December 1<sup>st</sup>, 2016

Public Health Office, San Joaquin Room, 1800 Mt. Vernon Ave., Bakersfield

	What	Who	Why	Time*
1	Introductions/Welcome	Jana Richardson	Participant familiarization	2 min.
2	STEMI QI Update	Jeff Fariss	Review of past quarter's STEMI QI Committee	5 min.
3	TEC Update	James Cox	Review of past month's Trauma Evaluation Committee and Core Measures	10 min.
4	ReddiNet and use of MCI Module	Jeff Fariss	Review of previous months' performance of the ReddiNet system and compliance by organizations	10 min.
5	Ambulance Destination Decision Policies and Procedures	Jana Richardson	Reminder of public comment period	2 min.
6	Patient Care Report Policies	Jeff Fariss	Reminder of public comment period	2 min.
7	Burn Center Designation	Jana Richardson	Review of comments. Announce final 15 day public comment period	10 min.
8	Pediatric Advisory Committee	George Baker	Review PAC membership and how to join.	2 min.
9	Announcements	All	Participant and Staff Updates	5 min.
<p>* Time listed is only an approximation; actual time for discussion may be sooner or longer than minutes shown; meeting may go until 5:00 PM, depending upon on nature and depth of discussion.</p>				



# Pediatric Advisory Committee

Recruitment for PAC is open. Anyone interested in being part of PAC should contact me as soon as possible after the meeting or by E-mail.

[Bakerg@co.kern.ca.us](mailto:Bakerg@co.kern.ca.us)

# MGT 439

## Pediatric Disaster Response and Emergency Prep

- Kern County EMS Division is hosting this training session over 2 days, April 13<sup>th</sup> and 14<sup>th</sup> 2017. The training is 8 hours each day beginning at 8 AM in the education center within public health @ 1800 Mt. Vernon Ave.
- FEMA student identification # is required to attend. Register online at [cdp.dhs.gov/femasid](http://cdp.dhs.gov/femasid) if you do not already have this.

---

## MGT-439

A 2010 report by the National Commission on Children and Disasters identified a training gap for emergency responders, first receivers, and emergency management personnel that reduced their effectiveness in responding to pediatric patients and their unique needs/considerations. This course addresses pediatric emergency planning and medical response considerations through a combination of lectures, small group exercises, and a table-top exercise.

### Topics

- Introduction to Pediatric Response
- Emergency Management (EM) Considerations
- Implications for Planning and Response
- Functional Access Needs Considerations
- Mass Sheltering
- Pediatric Triage and Allocation of Scarce Resources
- Pediatric Reunification Considerations
- Pediatric Decontamination Considerations

### Prerequisites

#### FEMA / SID Number

Students must register and bring a copy of their SID number to class. Register online:

[cdp.dhs.gov/femasid](http://cdp.dhs.gov/femasid)

### Recommendation

Familiarity with the National Incident Management System (NIMS) and the Incident Command System (ICS) via completion of study courses IS-100, IS-200, IS-700, and IS-800 (or equivalents).

### Course Length

Two days (16 hours)

### Venue

Jurisdiction

### Class Size

Minimum 30 Participants

### CE Credits

This course is approved and accredited for continuing education hours from:

**ENA- Emergency Nurses Association**

**AAFP - America Academy of Family Physicians**

**Texas Department of Health - EMS**

\*This continuing education activity was approved by the Emergency Nurses Association (ENA), an accredited approver of continuing nursing education by the American Nurses Credentialing Center's Commission on Accreditation.

### Participants

- Community and Hospital based Emergency Managers
- EMS Personnel
- Hospital Administration and Emergency Room Personnel
- Public Safety / Public Health Personnel
- School Administrators
- MRC Personnel
- Private sector
- Law Enforcement
- Disaster response/relief personnel
- County, State, and Federal personnel who respond to a local jurisdiction disaster event



KERN COUNTY  
**Public Health Services**  
DEPARTMENT

**MATTHEW CONSTANTINE**  
DIRECTOR

# **ANNOUNCEMENTS**





KERN COUNTY  
**Public Health Services**  
DEPARTMENT

**MATTHEW CONSTANTINE**  
DIRECTOR

**THANK YOU FOR COMING**

**HAVE A GREAT MONTH**

