



PLEASE DISTRIBUTE TO YOUR HEALTHCARE PROVIDERS

# Health Information Update

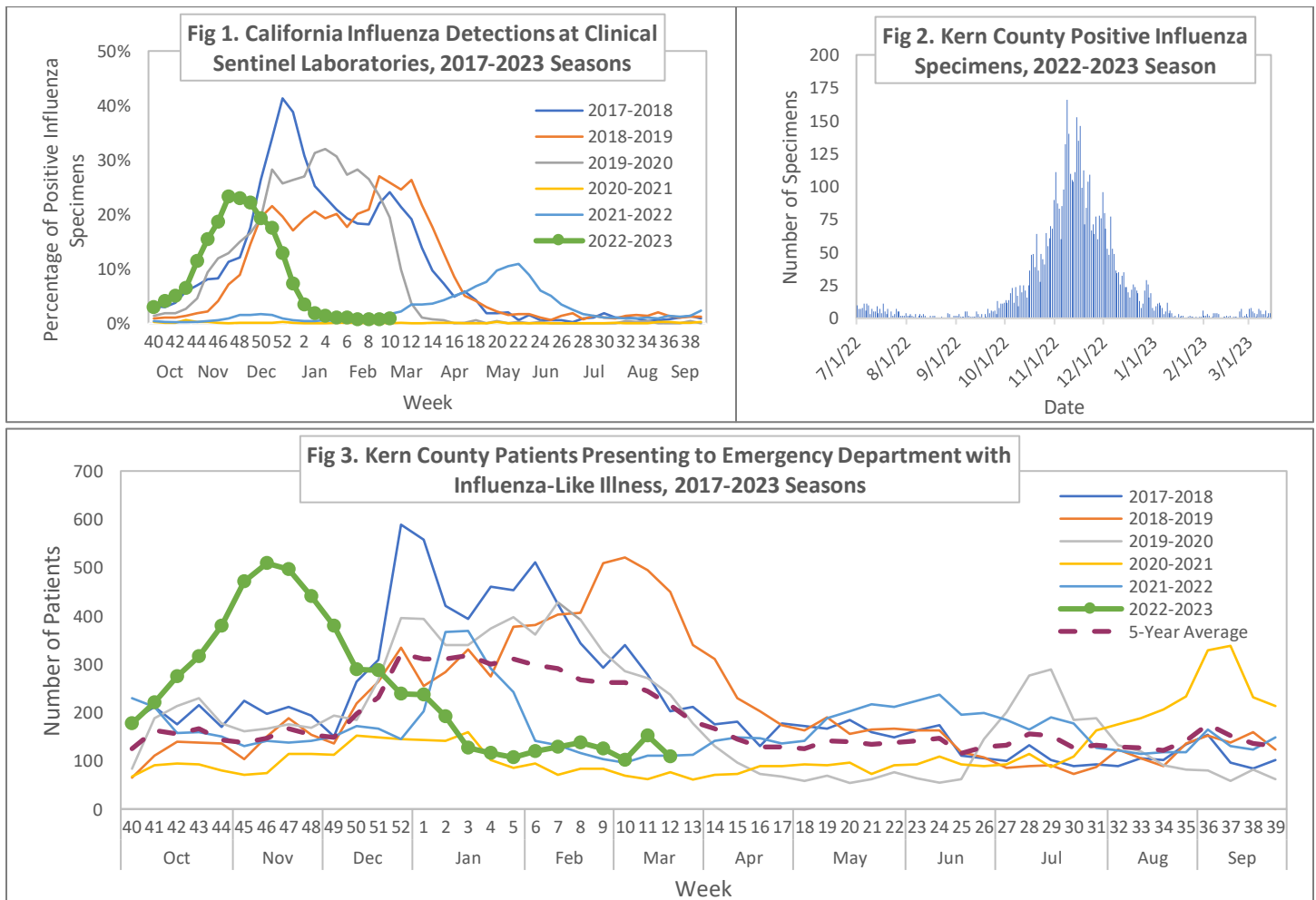
## Influenza Season Update

This document contains hyperlinks and can be accessed on our [Health Bulletin webpage](https://kernpublichealth.com/health-bulletin/) (<https://kernpublichealth.com/health-bulletin/>)

March 20, 2023

Dear Kern County Healthcare Provider:

During the 2022-2023 influenza season, statewide influenza activity began and peaked earlier than typical flu seasons. Statewide influenza activity also declined rapidly in December, reaching baseline levels of transmission by the end of January. Since January, statewide influenza detections at sentinel laboratories have been at levels typically seen in May (Figure 1). The number of specimens positive for influenza in Kern County is currently at baseline levels, similar to what is seen throughout the summer months (Figure 2). Similarly, the number of Kern County patients presenting to the emergency department with influenza-like illness has also returned to baseline levels (Figure 3).



The Health Officer Order originally issued on [August 6, 2018](#) and most recently reissued on [September 7, 2022](#) states that healthcare workers who do not receive their annual influenza vaccination must wear a respiratory mask for the duration of the influenza season. As stated in the Health Officer Order, the influenza season is designated as November 1 through April 30 of the following year. However, if influenza surveillance data demonstrate unusual activity, the influenza season may be adjusted accordingly.

**Given the data described above, for the purposes of the Health Officer Order, Kern County will conclude the 2022-2023 influenza season on March 31, 2023.**

Healthcare facilities and healthcare providers are reminded that all personal protective equipment (PPE) including surgical masks and respirators, are to remain available to staff and should be worn as appropriate for standard, contact, droplet, and airborne precautions.

If you have any questions, please contact KCPH by phone at 661-321-3000, via email at [publichealth@kerncounty.com](mailto:publichealth@kerncounty.com), or visit our [KCPH website](#).

Thank you,



Kristopher Lyon, MD  
Health Officer