

**KERN COUNTY PUBLIC HEALTH SERVICES DEPARTMENT
ENVIRONMENTAL HEALTH DIVISION
2700 "M" Street, Suite 300
Bakersfield, CA 93301**

Phone (661) 862-8740

Fax (661) 862-8701

**PUBLIC SWIMMING POOL, SPA, WADING POOL
PLAN CHECKLIST**

POOL DATA

Type of Pool: Standard Spa Wading Other

Surface area: _____ Capacity in gallons: _____

Required turnover in gallons
per minute minimum
(Section 3124B)

_____ Standard (6 hrs.) _____ Spa (1/2 hr.)
_____ Wading (1 hr.) _____ Temporary (2 hrs.)

FILTER DATA

Make and Model: _____

Area in Quantity of Total area
sq. ft.: _____ Filters: _____ in sq. ft.: _____

PUMP DATA

Make and Model: _____

Horse- Quantity of Total Output
power: _____ Pumps: _____ in GPM: _____

PUBLIC SWIMMING POOL PLAN CHECK LIST

The following checklist is based upon sections contained within California Code of Regulations Chapter 20, the California Building Code, and Health and Safety Code Chapter 5

PLAN REVIEW (3103 B.1)

- 1. All pool plans except those for spas drawn to scale of 1/4 inch = 1 foot.
- 2. Plans for spa drawn to scale of 1 inch = 1 foot.

SPECIAL POOL CLASSIFICATIONS (3103B)

- 1. Spa: Maximum surface area 250 sq. ft.; maximum depth 4 feet
- 2. Wading Pool: Maximum depth 18 inches; maximum sidewall depth 12 inches

ACCESSIBILITY TO THE PHYSICALLY HANDICAPPED PERSON (1104B.4.3)

- Swimming pool deck areas must be accessible and an assisting device provided . . . in gaining entry into pool.

POOL CONSTRUCTION (3108B)

- 1. Except for spas, the finish color shall be white.
- 2. Spa pools permitted to be finished in a pastel color other than white.
- 3. Spa pool bench and step edges to be a contrasting color. (e.g. trim tiles)
- 4. Pool free from projections or recessed areas.
EXCEPTION: Benches permitted in spa pools if the water depth over a bench does not exceed 24 inches.

- 5. Edge of pool steps to be a contrasting color (e.g. trim tiles).
- 6. Four-inch-wide line of slip-resistant tile, of contrasting color, across bottom of pool required at 4½-foot depth.
EXCEPTION: Pools with depth not exceeding 5 feet are exempt from requirement.

GEOMETRY (3109B)

- 1. Geometry of pool conforms to one of the appropriate diagrams at Figures 31B-1 through 31B-3.
- 2. The slope must be no greater than 1 foot vertically in 10 feet horizontally. For pools with a break in slope, the slope must be no greater than 1 foot vertically in 3 feet horizontally through the break. All slopes must be continuous and uniform.
- 3. Maximum allowable depth at shallow end of the pool is 3½ feet.
EXCEPTION: Special use pools are allowed a depth greater than 3½ feet at shallow end.

PERMANENT MARKINGS (3110B)

- 1. Depth markers required at:
 - a) Maximum depth
 - b) Minimum depth
 - c) Each end
 - d) Break in slope
 - e) Both sides at each end
 - f) On perimeter at increments not exceeding 25 feet
 - g) 6" tolerance for depth vs. depth meter
 EXCEPTION: Spas and wading pools shall have at least two depth markers.
- 2. Depth markers shall be located on coping or deck above waterline depth markers but no more than 4 feet away from pool water
- 3. Slip-resistant lane line markings not to exceed 12 inches in width.
- 4. No markings, lettering, or decorative designs of any type are permitted except for lane markings, depth marking lines, and safety markings.

- 5. Depth markers shall have numerals a minimum of 4 inches in height and be marked in units of feet or inches. Abbreviations FT and IN may be used.
- 6. No diving markers shall be installed on the deck directly adjacent to the depth markers required by Section 3110B for pool water depths 6 feet and shallower.

STEPS AND LADDERS (3111B)

- 1. If depth in shallow portion exceeds 1 feet, steps or ladders are required.
- 2. If depth in deep portion exceeds 4½ feet, steps or ladders are required.
- 3. If pool width exceeds 30 feet, a means of entry and exit are required on both sides at increments not exceeding 100 feet.
- 4. Ladders shall be equipped with slip-resistant tread surface and installed to provide clearance of not less than 3 inches or more than 5 inches between any part of the ladder and the pool wall.
- 5. Minimum tread of stairs 12 inches, maximum risers 12 inches. If top steps curve convexly, top step tread to be at least 18 inches.
- 6. Safety rail extends from deck to a point above top of lowest step. Upper surface of safety rail located at least 28 inches above deck.
- 7. Ladder treads and recessed step holes shall have a minimum tread of 5 inches, width of 14 inches.
- 8. Hand railings shall be provided at the top of both sides and shall extend over the coping or edge of the deck for each ladder and step hole.
- 9. Two handrails shall be provided for spas.

HANDHOLDS (3112B)

- 1. Located not more than 9 inches above water level.
EXCEPTION: Handholds not required at wading pools.

- 2. Bull-nosed coping or cantilevered decking shall be no greater than 2½ inches thick and shall extend out over the pool at least 1 inch and not more than 2 inches.
EXCEPTION: Other types of handholds permitted at spas.
- 3. For special use pools used for instruction or competitive swimming, perimeter overflow lip required.

DECKS (3114B)

- 1. Four-foot-minimum deck to surround pool and rear of diving board.
EXCEPTION: Deck required only on 50 percent of spa pool perimeter. Spa decking to be at least 4 feet wide at steps.
- 2. Coping shall be slip-resistant.
- 3. Six-foot clearance between spa and adjacent pool.
- 4. Deck sloping at least 1/4 inch per foot away from pool.
- 5. Deck drains for not more than 400 square feet/drain and drains spaced not more than 25 feet apart.
- 6. Proposed deck materials of approved type.
- 7. Temporary Training Pool: Deck may be omitted. If raised deck provided, handrail required at perimeter.
- 8. Spa: Landscape, planters, flower beds, or similar unpaved areas shall not be located within 4 feet of spa.

POOL LIGHTING (3115B)

- 1. No reflectance or glare interfering with observance of every part of the pool from the deck.
- 2. For nighttime use, it completely illuminates the pool.
- 3. Deck area lighting is bright enough so a person could identify hazards on the deck.

BATHHOUSE, DRESSING, SHOWERS, AND TOILETS FACILITIES (3116B)

- 1. Showers and dressing facilities may not be required if available in adjacent living quarters.
- 2. Toilet facilities not required if located in living quarters not more than 300 feet in travel distance from the pool or in an adjacent public building.
- 3. One bather per 15 square feet of pool surface. Divide factor by 2 to determine sex distribution.
- 4. One shower per 50 bathers.
- 5. One toilet per 60 women; one toilet and urinal per 75 men; one lavatory per 80 bathers.
- 6. Floors coved 5 inches up the wall and sloped not less than 1/4 inch per foot to drain or other approved surface disposal. Floors hard, nonabsorbent surfaces and shall be slip-resistant.
- 7. Shower and lavatories have hot and cold water and temperature control which limits temperature to 110°F. Tempered water allowed.
- 8. Walls of a material not adversely affected by moisture, smooth and finished to facilitate cleaning.
- 9. All doors and windows arranged to prevent viewing the interior. View screens allowed.
- 10. Soap, toilet paper, and paper towels in dispensers. Air blowers OK (CCR 65551).

DRINKING FOUNTAIN (3117B)

- 1. Not required when available in adjacent living quarters or adjacent buildings.
- 2. Guarded-angle jet drinking fountains required. Number of fountains based upon one bather per 15 square feet and computed at 1 fountain per 250 bathers plus an additional fountain for each additional 200 bathers.

HOSE BIBS (3118B)

- 1. Provided at each pool and protected against backflow.

- 2. Reach all areas of the deck with 75-foot length of hose.

FENCING AND GATES (3119B) (KERN COUNTY ORDINANCE)

- 1. Provided at each pool and pool enclosed by a 5-foot-minimum height fence, building, or enclosure.
- 2. Openings in fence or enclosure not to exceed 4 inches (inside measurement); NO handholds or footholds. Horizontal members shall be spaced at least 48 inches apart. The bottom of the enclosure shall be within 2 inches of the finished grade.
- 3. Gate shall be equipped with a self-closing and self-latching device located not less than 4 feet above deck (Kern County Ordinance). Gates shall open outwardly away from pool.
- 4. The pool enclosure shall have at least one means of egress without a key for emergency purposes. Unless all gates or doors are so equipped, those gates and/or doors which will allow egress without a key shall be clearly and conspicuously labeled, in letters at least 4 inches high, "EMERGENCY EXIT."
- 5. Chain link may be used provided that openings are not greater than 1 ¾ inches measured horizontally
- 6. Pool enclosure fence cannot be shared with a private fence. The area 5 ft beyond a pool enclosure shall be a common area open to the public
- 7. Pool enclosure shall be constructed over a hard and permanent material equivalent to concrete

SIGNS (3120B) - Required Signs (CCR 65539)

- 1. All pool signs shall be affixed to a location visible to all pool users and have lettering a minimum 4 inches high unless specified.
- 1. No lifeguard on duty/child supervision warning sign
- 2. Illustrated artificial respiration sign with text at least ¼ inch high

- 3. Emergency phone number (9 - 1 - 1) sign along with phone number of nearest medical facility and name and street address of pool facility
- 4. Occupant capacity sign (pool and spa)
- 5. "No diving" sign for pools with a maximum depth of 6 feet
- 6. Spa warning sign (1" minimum lettering)
- 7. Emergency shut-off switch sign (spas) (1" minimum lettering)
- 8. No use of pool allowed after dark (if proper lighting not provided)
- 9. "KEEP CLOSED" sign shall be posted on the exterior side of all gates and doors leading into the pool area
- 10. Diarrhea sign. Posted at the entrance area of a public pool (1" minimum lettering)

SAFETY EQUIPMENT (CCR 65539)

- 1. 12-foot pole with body hook.
- 2. Life ring with rope 3/16 inch in diameter, long enough to span the width of the pool.

INDOOR VENTILATION (3121B)

- 1. Indoor pools shall be adequately ventilated.

FOUNDATIONS FOR POOL EQUIPMENT (3122B)

- 1. Equipment to be mounted on concrete pad and sloped at least 1/4 inch per foot to drain or other approved surface disposal.
- 2. Enclosure provided so that access is limited to only authorized persons

GAS CHLORINE ROOM (3125B)

- 1. Room not located below ground level.

- 2. Entry door shall open to the exterior of the building and shall not open directly towards the pool or pool deck.
- 3. Fresh air intake within 6 inches of ceiling.
- 4. Mechanical exhaust which produces at least 60 air changes per hour and is vented to outside air. Discharge located at least 10 feet from windows or adjacent buildings.

RECIRCULATION (3125B and 3126B)

- 1. Flow velocity not to exceed 8 feet per second on inlet piping and 6 feet per second on suction piping.
- 2. Pressure gauge on influent and effluent lines.
- 3. Flow meter.
- 4. Vacuum gauge on suction type filters.
- 5. Spa: Two spa pools permitted to share the same recirculation and treatment system, provided that the flow and chlorination are individually metered and adjustable.
- 6. Backwash piping provided for filters needing backwashing.

PUMP CAPACITIES - DESIGN FLOW (3126B)

- 1. Pressure D.E. - 60-foot head
- 2. Vacuum D.E. - 40-foot head
- 3. Rapid Sand - 45-foot head
- 4. High Rate Sand - 60-foot head
- 5. Cartridge - 60-foot head
- 6. Pumps with other hydraulic characteristics may be permitted.

WATER SUPPLY (3127B)

- 1. Permanently installed line.
- 2. Approved backflow device attached to permanently installed line.
- 3. From an approved source.

FILTER REQUIREMENTS (3128B through 3132B)

- 1. Each filter vessel and element shall be installed, piped and provided with necessary valves so that it can be isolated from the system for repairs and backwashing.
- 2. Rapid Sand - Maximum 3 GPM/sq. ft.;
Backwash minimum 15 GPM/sq. ft.
- 3. D.E. - Maximum 2 GPM/sq. ft., maximum 2½ GPM for
continuous feeding or filter aid for pools 2000 square
feet or more.
- 4. High Rate
Sand - Suggested maximum 20 GPM/sq. ft.
Backwash minimum 15 GPM/sq. ft.
- 5. Cartridge
Filters - Maximum 0.375 GPM/sq. ft.

CHEMICAL AND DISINFECTANT FEEDER (3133B through 3134B)

- 1. Approved type.
- 2. If gas chlorine, scale required.
- 3. The disinfectant feeder shall be capable of supplying not less than the equivalent of 3 pounds of chlorine per day per 10,000 gallons of pool water capacity.

SKIMMERS (3136B.1) (pool area not over 5000 square feet)

- 1. One skimmer for each 500 square feet or fractional part thereof or an adequate number to meet 100% of pump flow at the manufacturer's maximum flow rating, whichever is greater
- 2. Capable of withdrawing minimum 75% required recirculation capacity.

- 3. Gate valve or jandy valve.
- 4. Equalizer line with anti-entrapment cover (if used).
- 5. Located to aid in recirculation and skimming.

PERIMETER OVERFLOW (3136B.2) (required for pools over 5000 square feet)

- 1. Capable of withdrawing minimum of 75% required recirculating capacity.
- 2. Channel minimum 3 inches deep;
bottom width of channel minimum 3 inches;
opening beneath deck into channel minimum 4 inches.
- 3. Channel lip maximum 12 inches below top of deck;
rounded lip edge maximum thickness 2½ inches for top 2 inches.
Minimum thickness 1 inch for top 2 inches.
- 4. Channel outlet minimum 2½ inches, spaced not more than 15 feet apart
and channel slope to outlets not less than 1/4 inch per foot.
- 5. Channel drain grates 1½ times area of outlet pipe.
- 6. Surge tank storage minimum 1 gallon/square foot of pool surface.
- 7. Automatic surge flow control to make-up water with manual override for
maintaining pool water level.

OUTLETS (3137B.1 and 2-9013)

- 1. Designed so that the pool can be emptied.
- 2. Gate valve or jandy valve.
- 3. Grates removable only with tools, with slots or openings not to exceed 1/2
inch in smaller dimension.
- 4. Spa ONLY: Duplicate drains for both the recirculation system and
aeration/jet system or single drains with safety covers for both
systems.

- 5. Main drains shall be hydraulically balanced and symmetrically plumbed through one or more "T" fittings and shall be separated by a distance of at least 3 feet apart

HYDROSTATIC DEVICES (3137B.1)

- 1. In areas of anticipated high groundwater, a proved hydrostatic relief device is required.

INLETS (3137B.2)

- 1. Minimum of 2 inlets for the first 10,000 gallons and one inlet for each additional 10,000 gallons or fractional part, at least 10 feet apart
EXCEPTION: Minimum of 2 inlet permitted at spa.
- 2. Located not less than 18 inches below water line.
EXCEPTION: Spa and wading pools exempt.
- 3. Pools greater than 40 feet width or more than 3,000 square feet: minimum of 2 floor inlets for the first 10,000 gallons and one floor inlet for each 10,000 gallons or fractional part. At least 10 feet apart

SPA POOL SPECIAL REQUIREMENTS (3138B)

- 1. Aeration/jet system shall be separate from filtration system and not interconnected with non-spa pool.
- 2. Maximum temperature 104°F.
- 3. Emergency shut-off switch located adjacent to spa pool (NEC 680-14).

CLEANING SYSTEMS (3140B)

- 1. Built-in or portable vacuum cleaning device.
- 2. If jet type units are used, approved backflow devices required.

WASTE DISPOSAL (3141B)

- 1. Sight glass (not required if readily visible air gap connection to sewer provided). Separation tank(s) required for D.E. filters.

- 2. No direct connection to sanitary sewer, storm drain, or other drainage system.
- 3. Separation tanks are required for D.E. filters

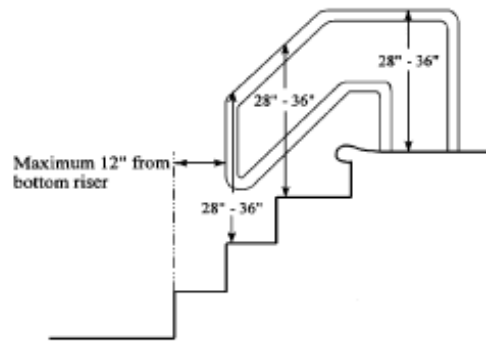
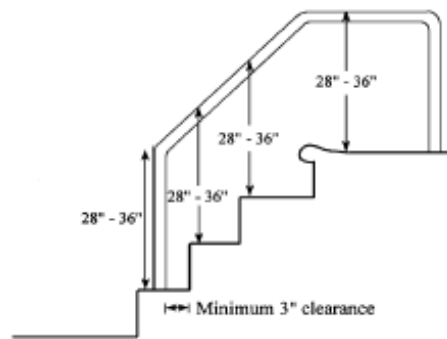
ELECTRICAL (Article E680, 3160B, and CCR 2569.1-2569.20)

- 1. Underwater light and area lighting if pool used at night.
- 2. Spa emergency shut-off switch controlling recirculation and aeration and/or jet system located adjacent to spa.
- 3. Switch for mechanical ventilation and lighting for gas chlorination storage room shall be outside and adjacent to entry door.
- 4. GFCI for underwater light of 15 volts or greater.
- 5. Other receptacles located at least 10 feet from wall of pool. Requires GFCI if within 15 feet of pool wall.

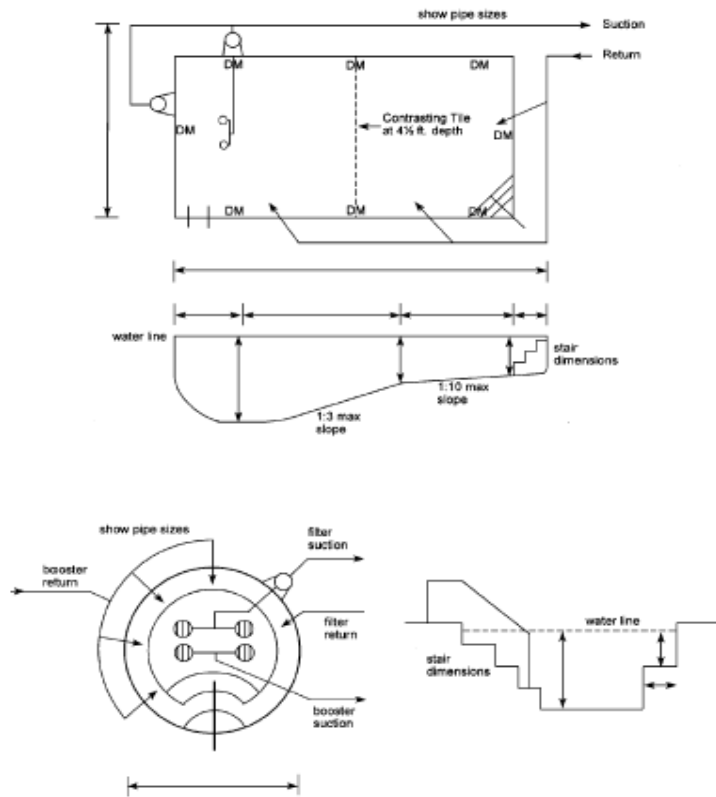
WADING POOL SPECIAL REQUIREMENTS (3161B)

- 1. Maximum velocity of pump suction shall not exceed 6 feet/second when coming from 100 percent of pump's flow and one drain is blocked.
- 2. Shall have at least two circulation drains per pump that are hydraulically balanced and symmetrically plumbed through one or more "T" fittings and are separated by a distance of at least 3 feet in any direction between drains.

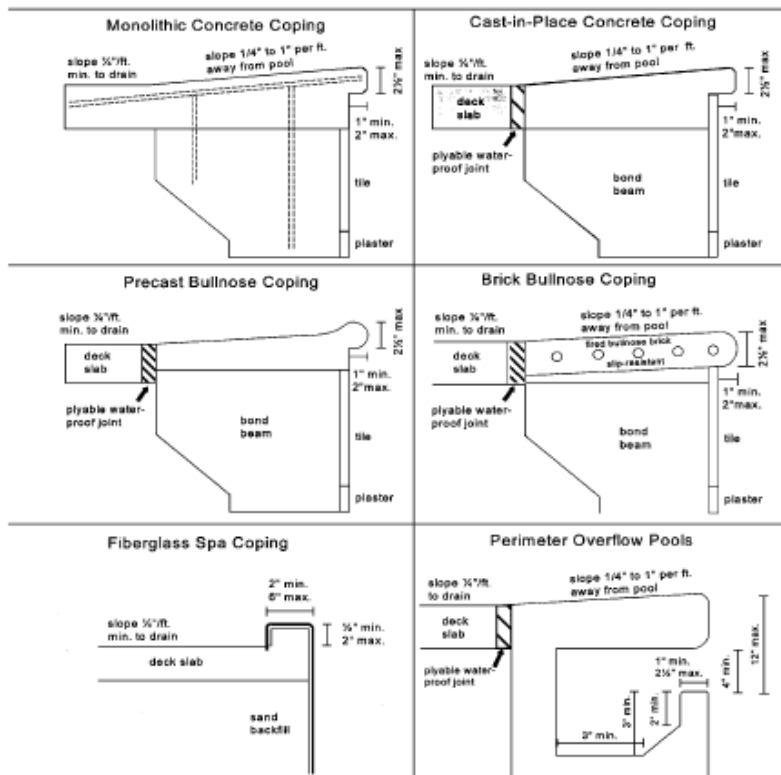
APPROVED HANDRAIL CONFIGURATION



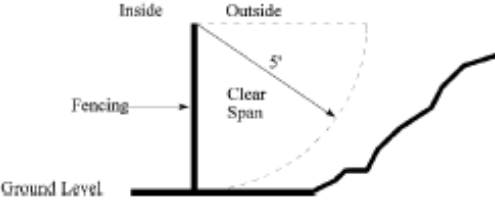
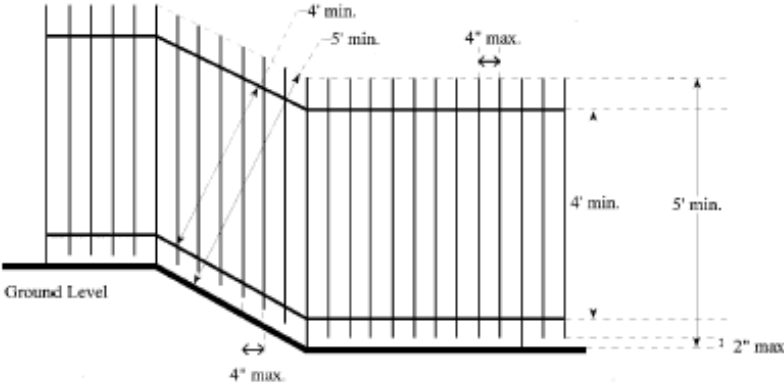
DIAGRAMS AND SPECIFICATIONS



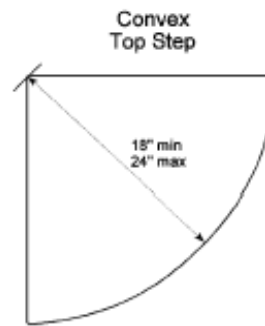
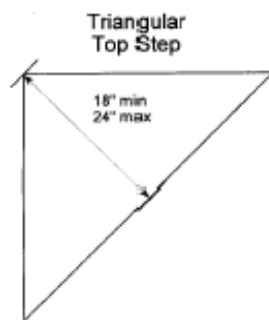
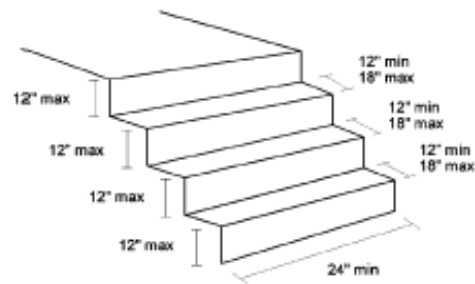
APPROVED COPING



APPROVED POOL ENCLOSURE FENCING



STAIR DIMENSIONS



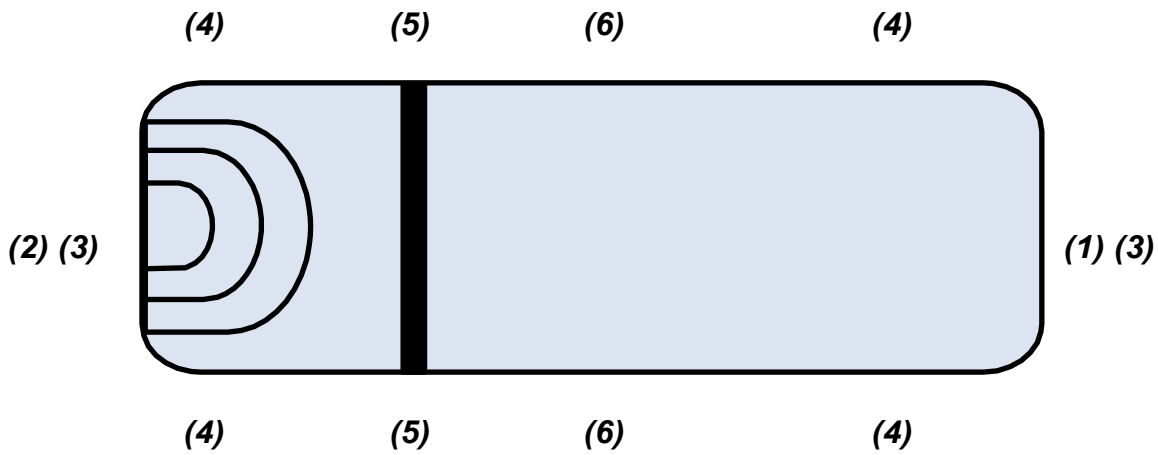


FIGURE 31B-8

DEPTH MARKER LOCATIONS

Notes for Figure31B-8

1. *Maximum depth.*
2. *Minimum depth.*
3. *Each end of pool.*
4. *Both sides at the shallowest and deepest part of pool.*
5. *At the break in the bottom slope between the shallow and deep end.*
6. *Along the perimeter of the pool at distances not to exceed 25 feet.*