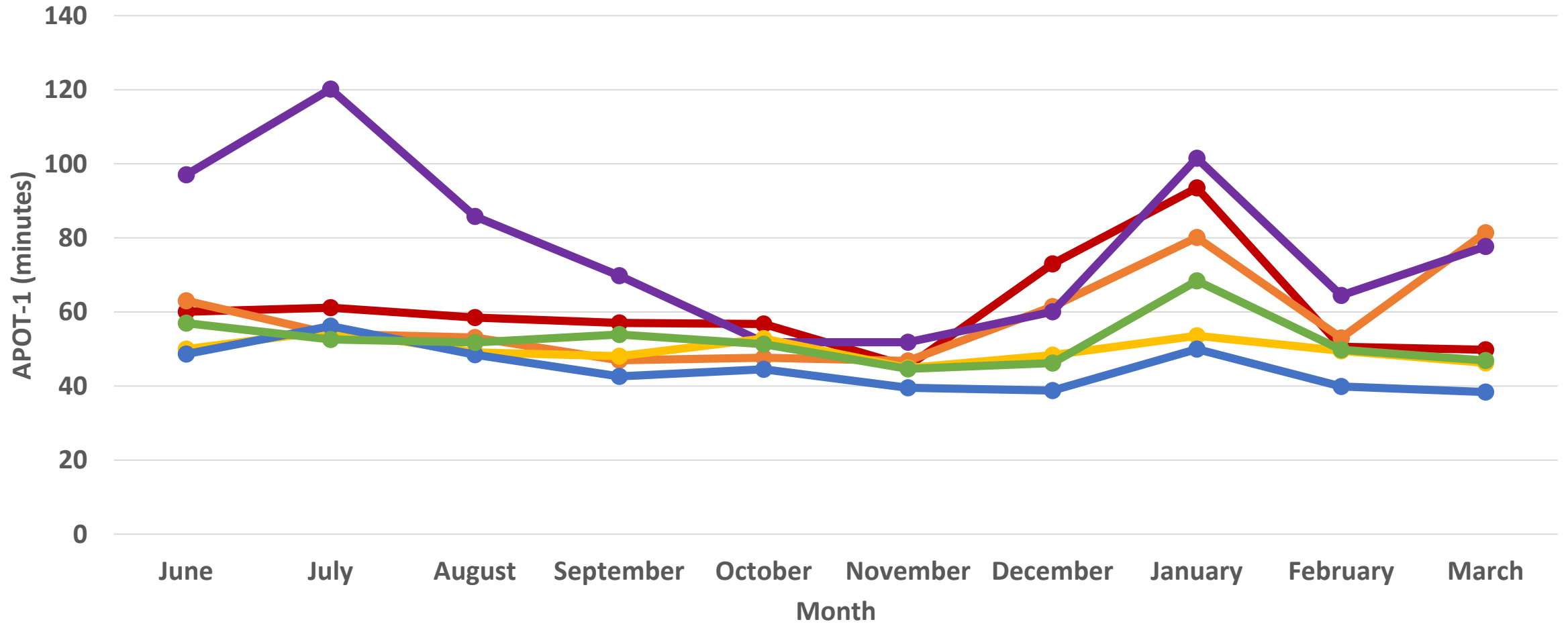


# A POT-1: March 2018

Rank	Hospital	Number of Transports	A POT-1 (Minutes)
1	Ridgecrest Regional	218	7.7
2	Kern Valley Healthcare District	142	13.4
3	Delano Regional Medical Center	250	22
5	Tehachapi Hospital	107	34.1
6	Mercy Hospital	500	38.4
6	Kern Medical	763	46.3
7	Mercy Southwest Hospital	548	46.9
8 (9)	Adventist Health	1564	49.8 (93.5)
9	Bakersfield Memorial	1365	78.6
10	Bakersfield Heart Hospital	248	81.4

# APOT-1 Bakersfield Hospitals: June 2017-March 2018



Adventist Health Bakersfield

Bakersfield Heart Hospital

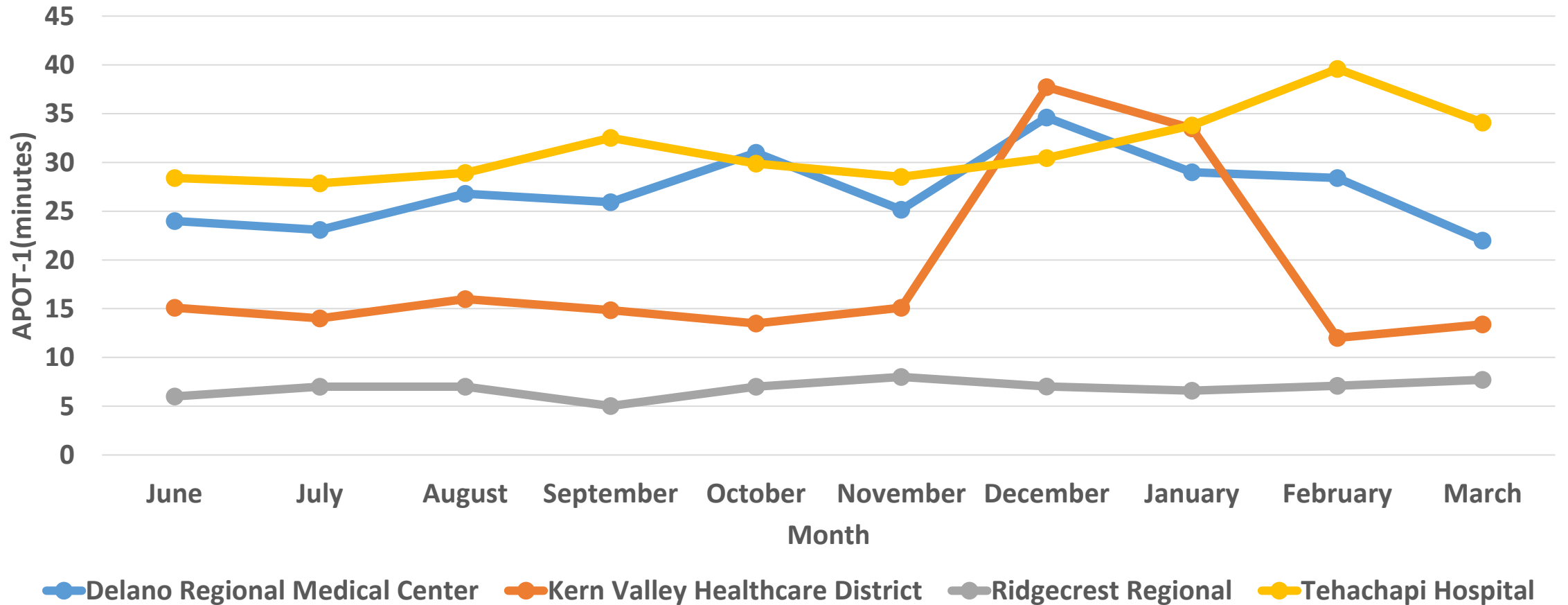
Bakersfield Memorial Hospital

Kern Medical

Mercy Hospital

Mercy Southwest Hospital

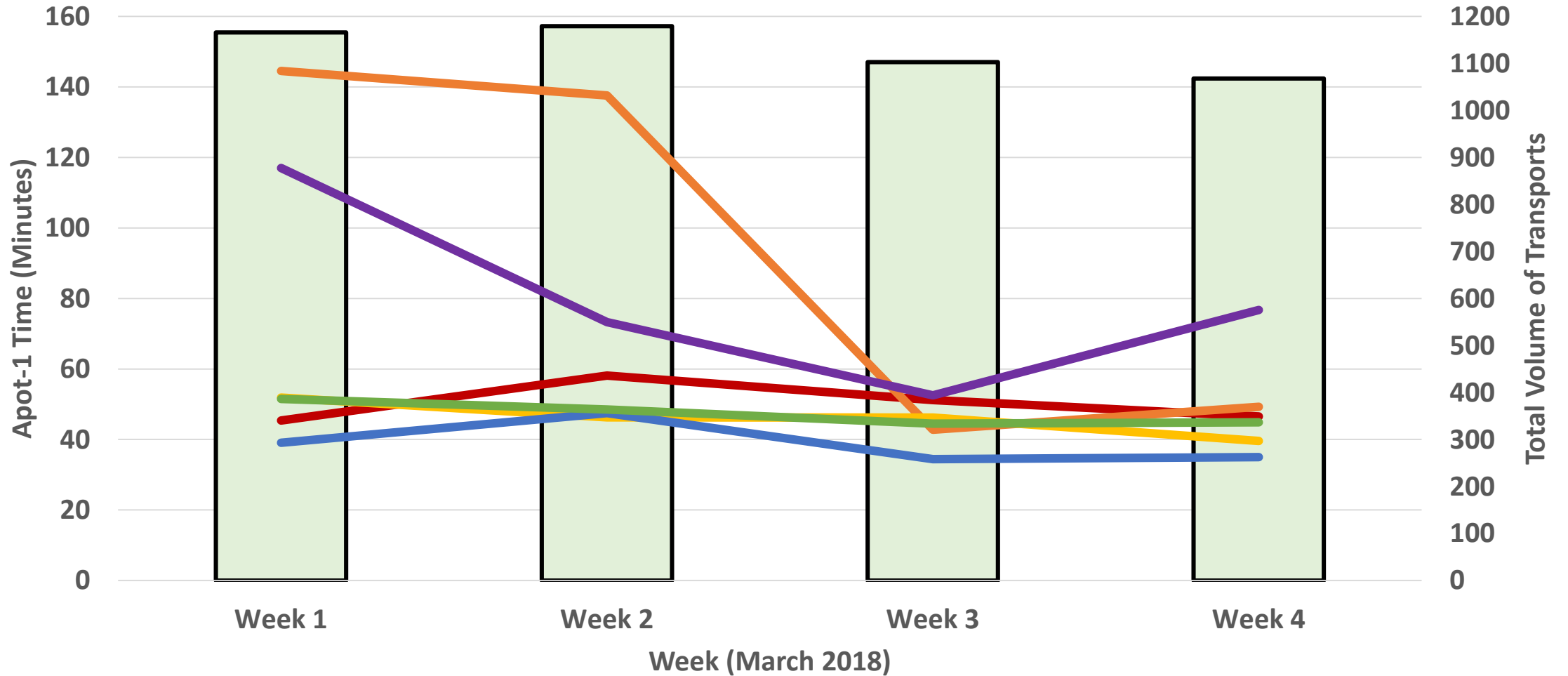
# APOT-1 Outlying Area Hospitals: June 2017- March 2018



# APOT-1 and Transport Volume

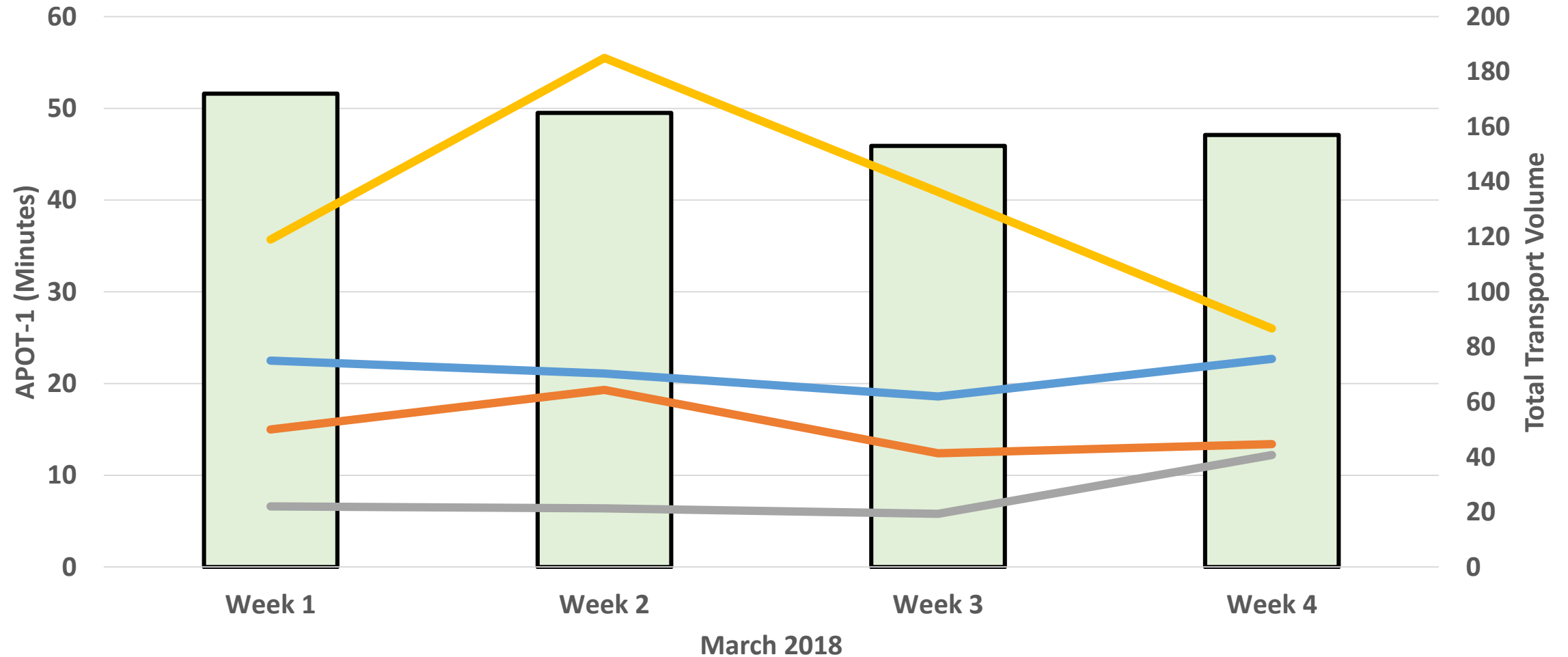
March 2018, Weekly

# Bakersfield Hospitals



- Adventist Health Bakersfield
- Bakersfield Heart Hospital
- Bakersfield Memorial Hospital
- Kern Medical
- Mercy Hospital
- Mercy Southwest Hospital

# Outlying Area Hospitals



Delano Regional Medical Center Kern Valley Healthcare District Ridgecrest Regional Tehachapi Hospital

# APOT-2

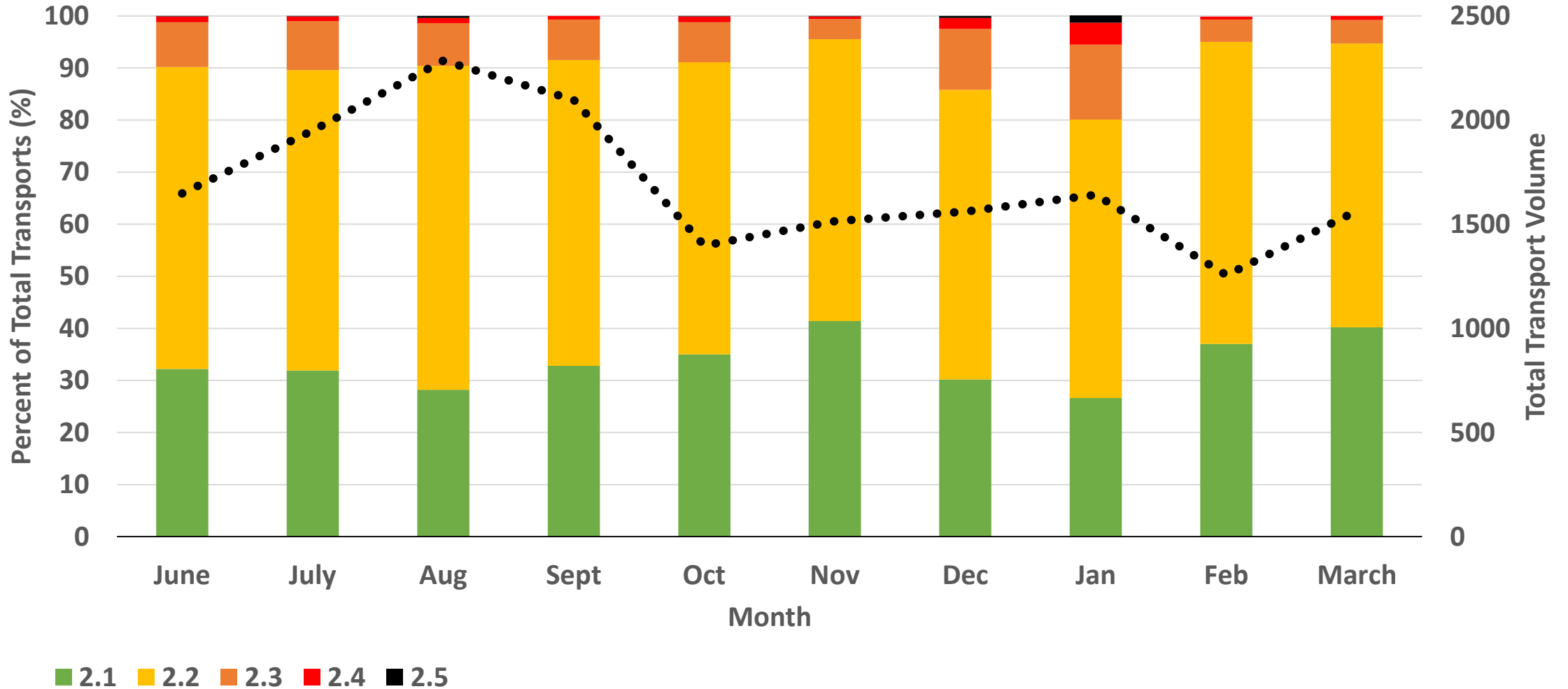
Individual Hospital Data

# A POT-2: March 2018

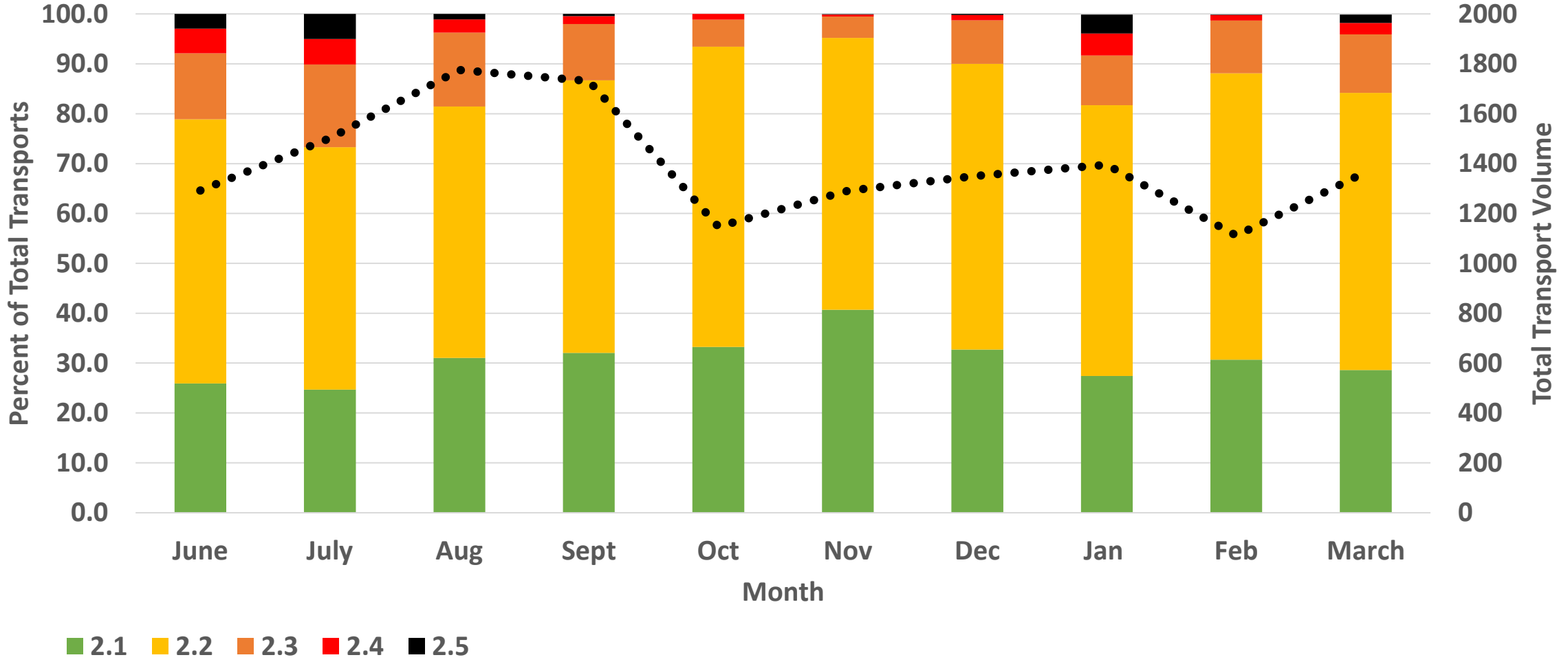
Hospital	2.1 (N, %) (≤20 min)	2.2 (N, %) (21-60 min)	2.3 (N, %) (61-120 min)	2.4 (N, %) (121-180 min)	2.5 (N, %) (>180 min)	Total Number of Transports
Bakersfield Memorial Hospital	390 (28.6)	759 (55.6)	161 (11.7)	3 (2.4)	23 (1.7)	1367
Adventist Health Bakersfield	628 (40.2)	853 (54.5)	70 (4.5)	12 (0.77)	0 (0)	1564
Bakersfield Heart Hospital	87 (35.1)	127 (51.2)	18 (7.3)	9 (3.6)	7 (2.8)	248
Mercy Hospital	265 (54)	220 (44.8)	6 (1.2)	0 (0)	0 (0)	548
Kern Medical	285 (37.4)	447 (58.6)	29 (3.8)	2 (0.3)	0 (0)	763
Mercy Southwest Hospital	242 (44.2)	286 (52.2)	19 (3.5)	1 (0.2)	0 (0)	500
Kern Valley Healthcare District	135 (95.1)	5 (3.5)	2 (1.4)	0 (0)	0 (0)	142
Tehachapi Hospital	73 (68.2)	32 (30)	2 (1.9)	0 (0)	0 (0)	107
Delano Regional Medical Center	220 (88.4)	28 (11.2)	1 (0.4)	0 (0)	0 (0)	249
Ridgecrest Regional	216 (99.1)	2 (0.9)	0 (0)	0 (0)	0 (0)	218



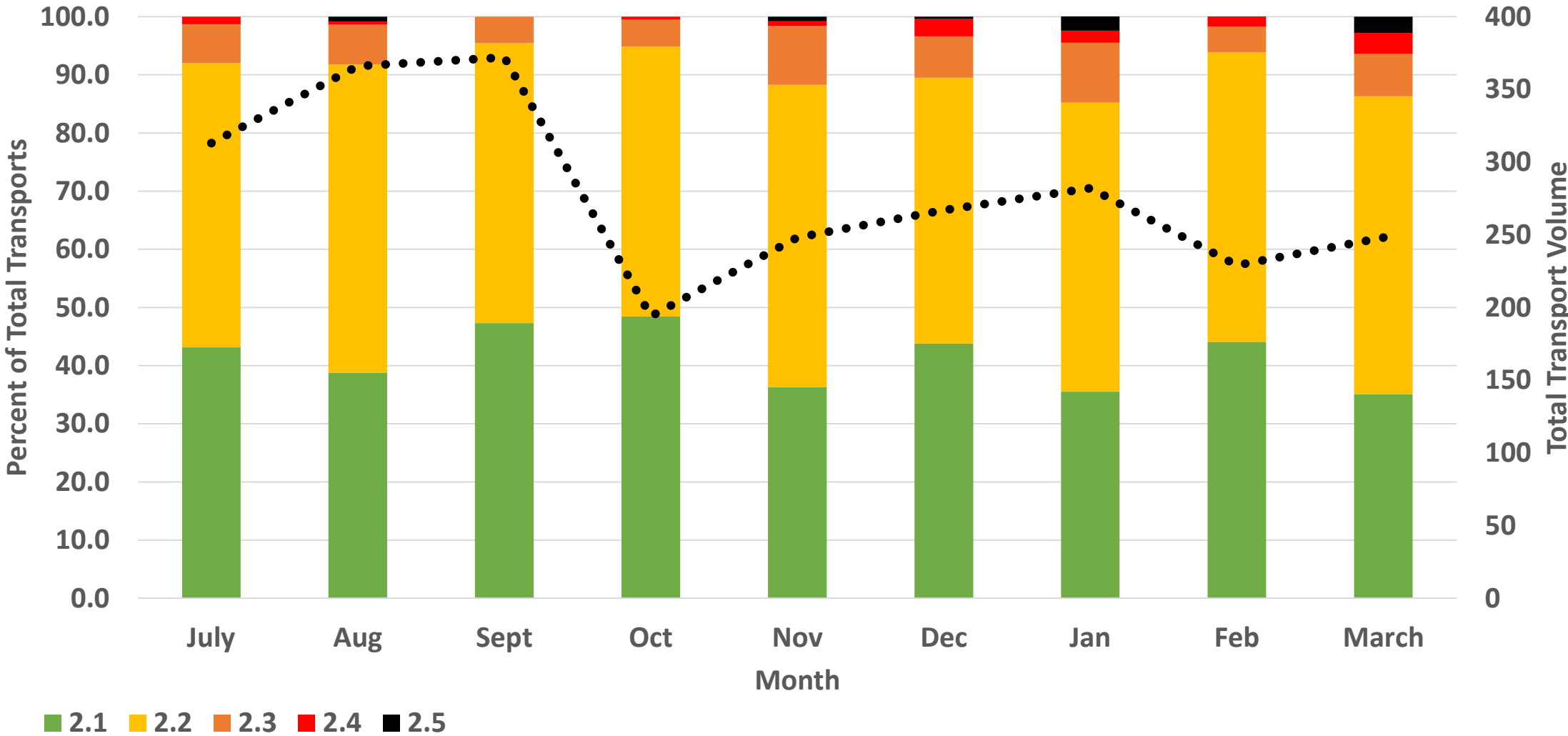
# Adventist



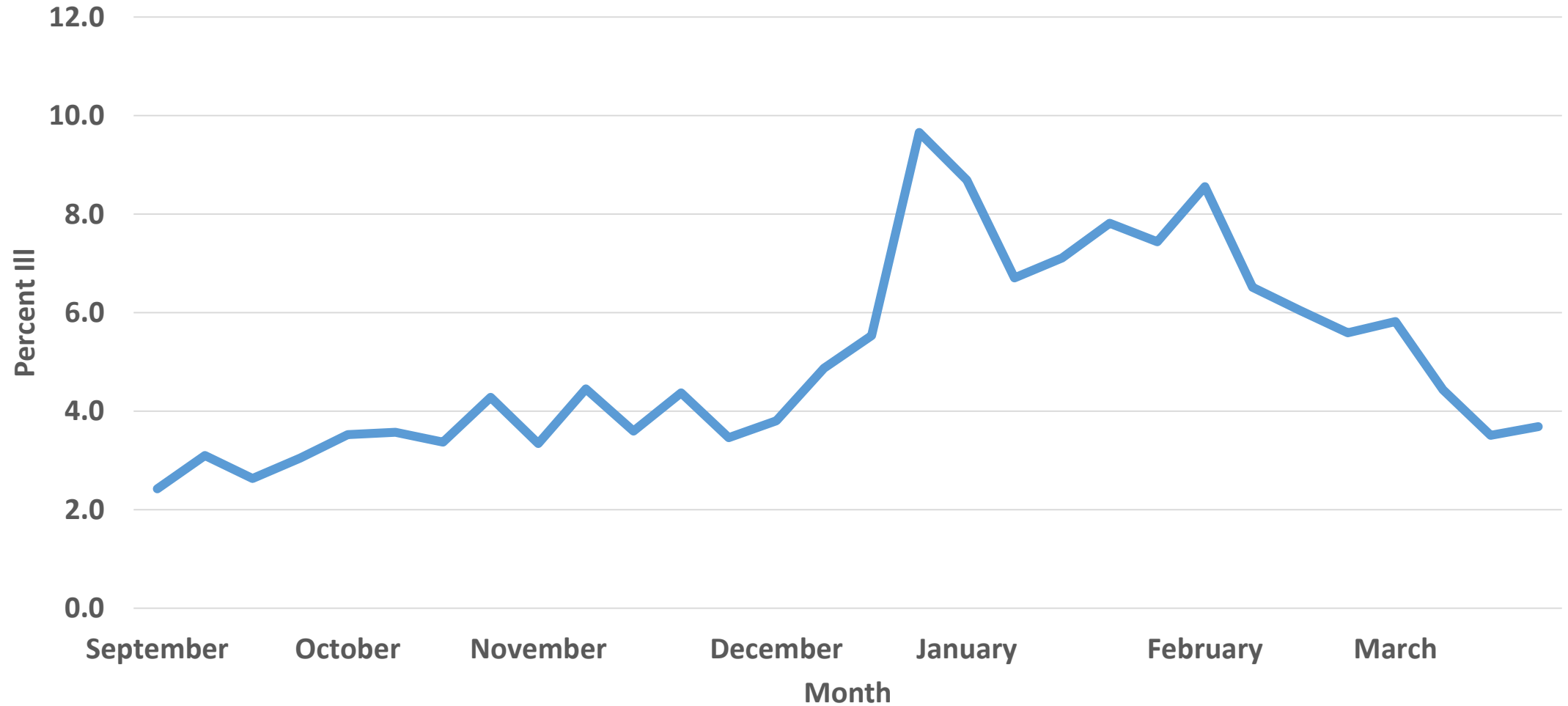
# Bakersfield Memorial



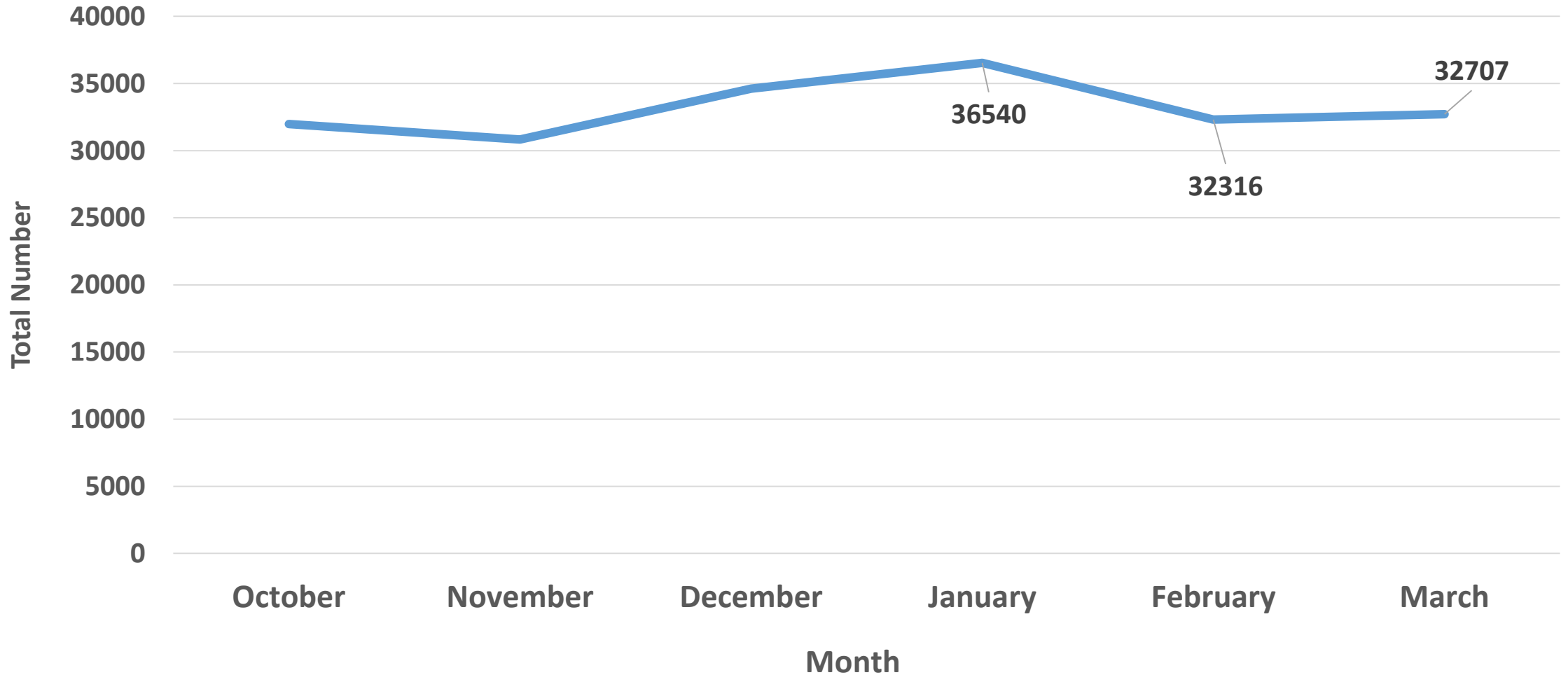
# Bakersfield Heart Hospital



# Proportion of Kern County ED Visits Reporting Illness with Fever: 2017-2018



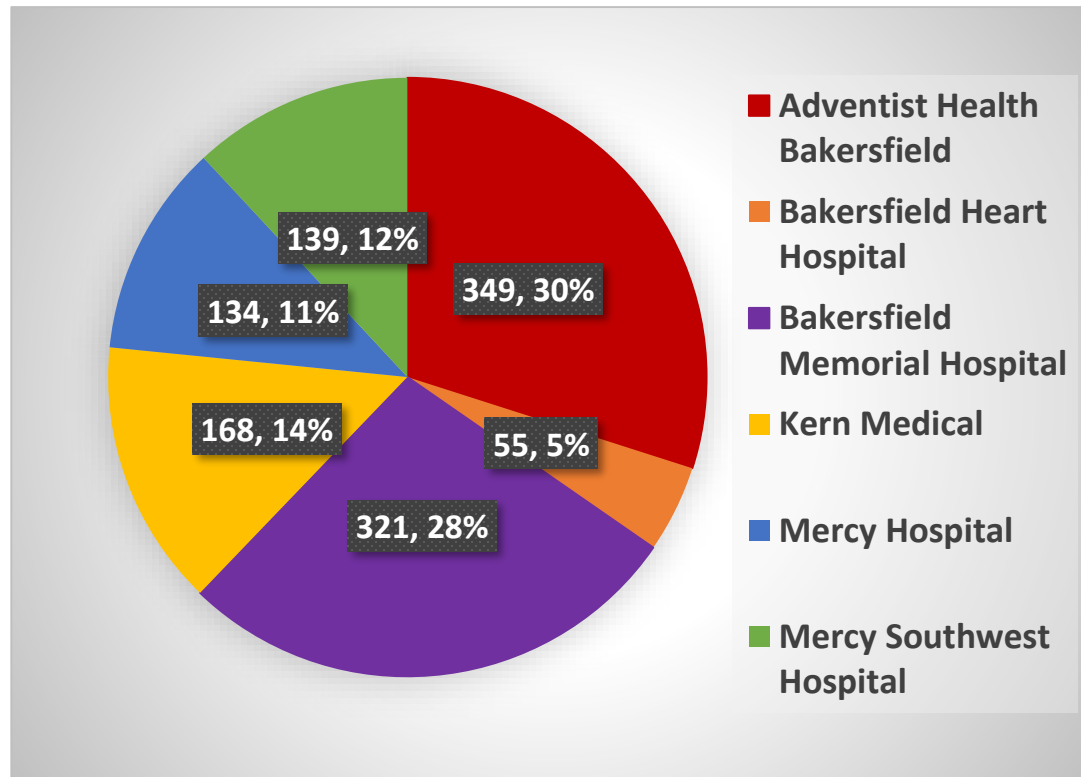
# Kern County: Total Number of Acute Care Interactions, Oct 2017-March 2018



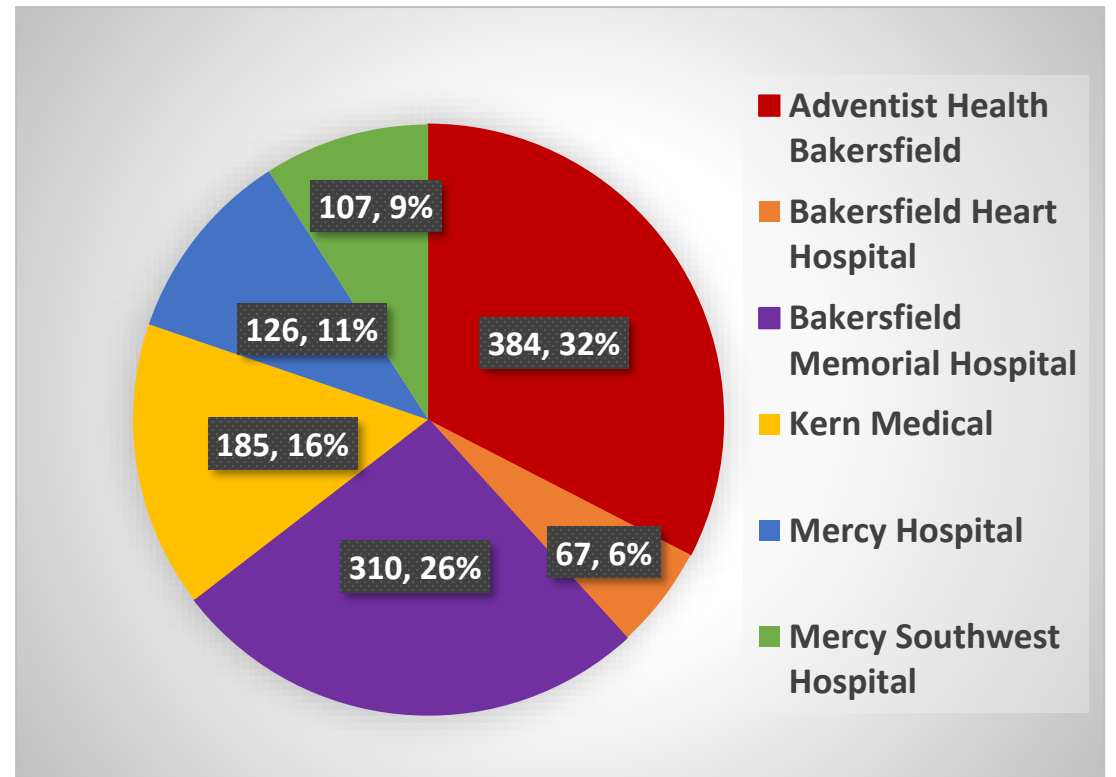
Extra Slides

# Transport Volume By Hospital

## Week 1

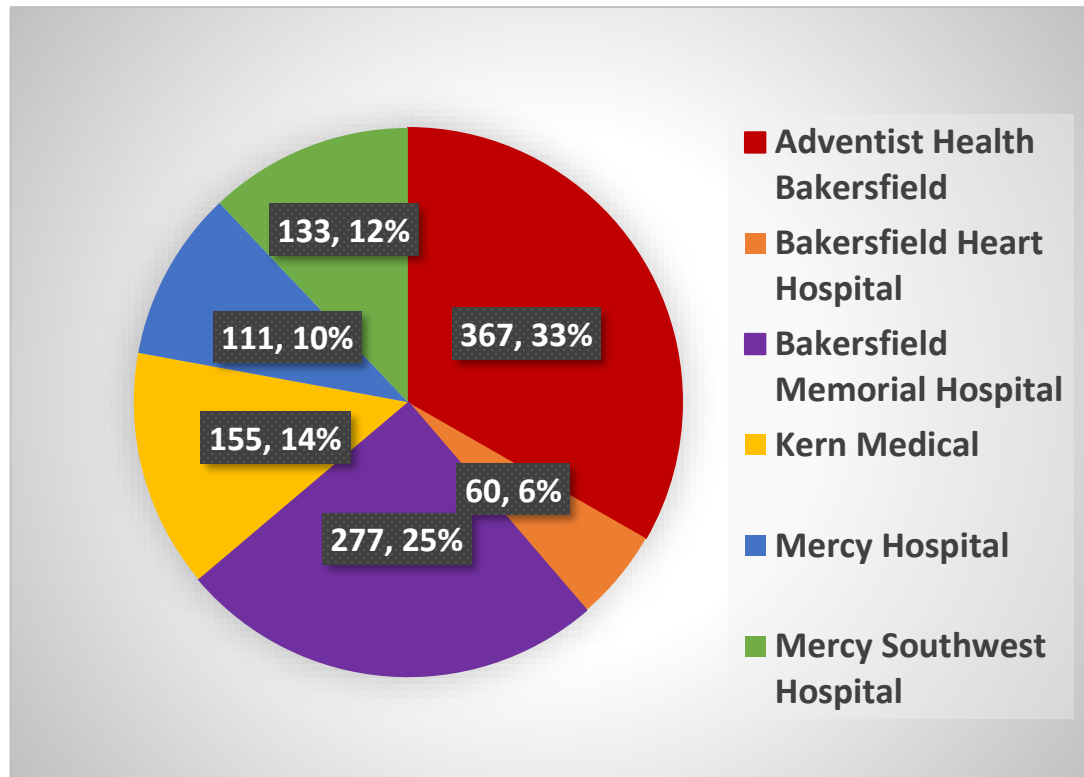


## Week 2

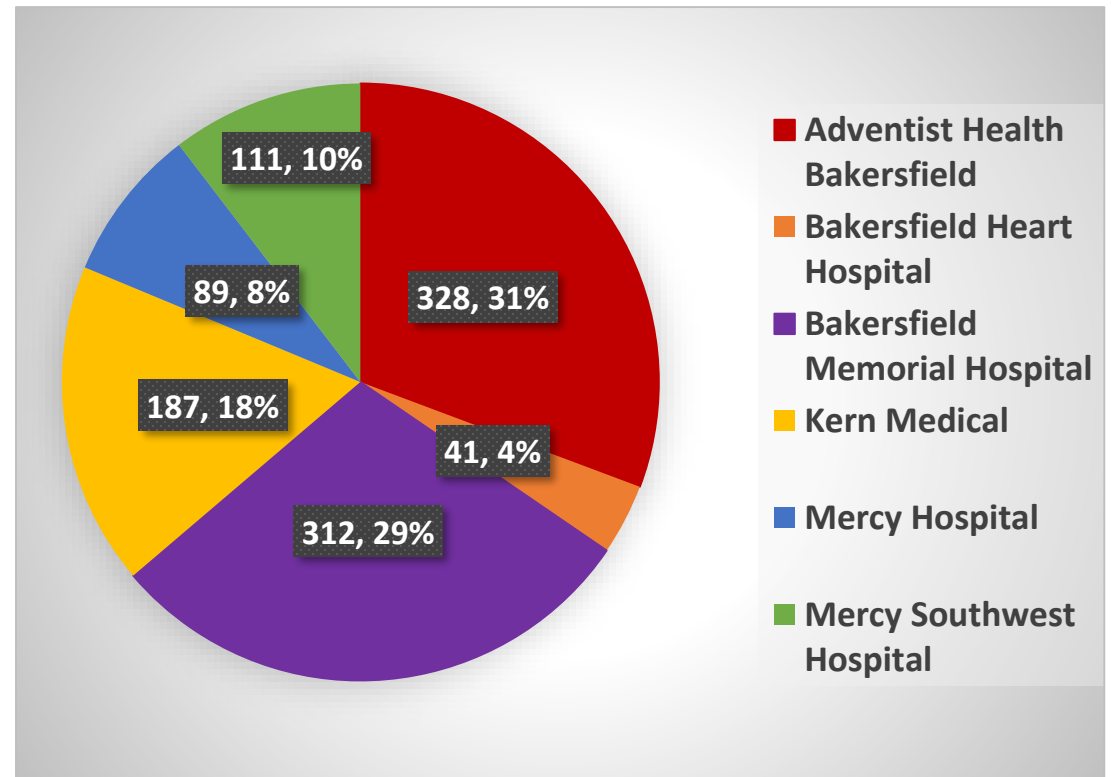


# Transport Volume by Hospital, Cont.

## Week 3



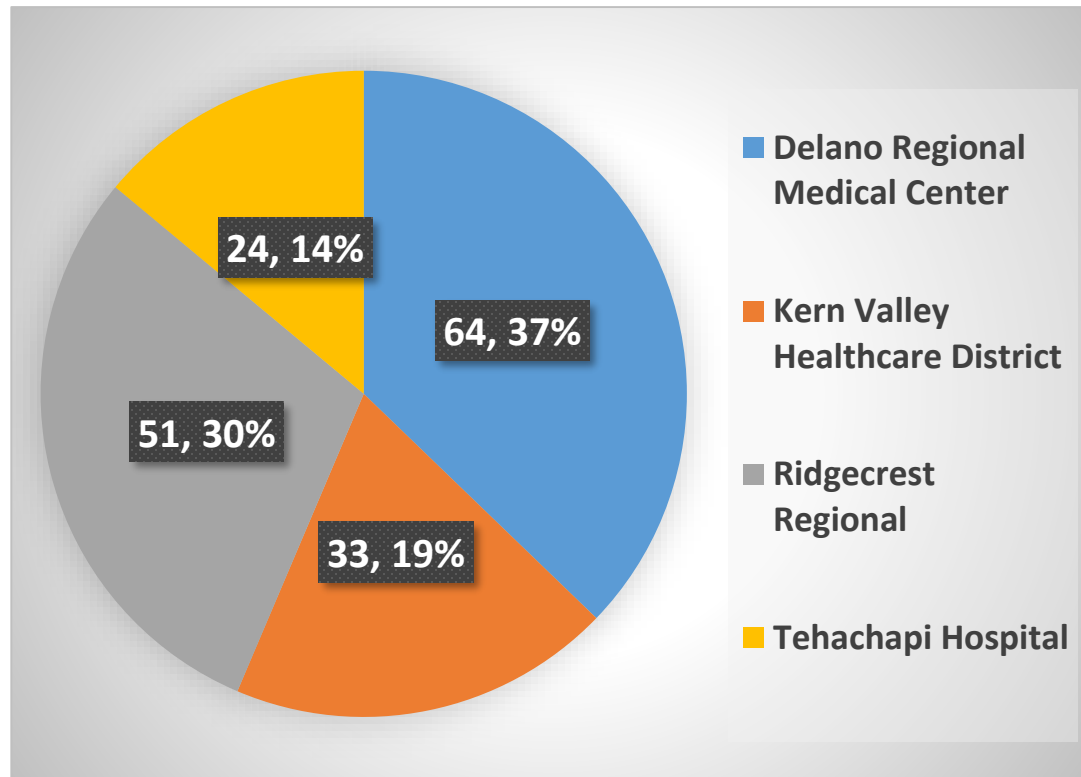
## Week 4



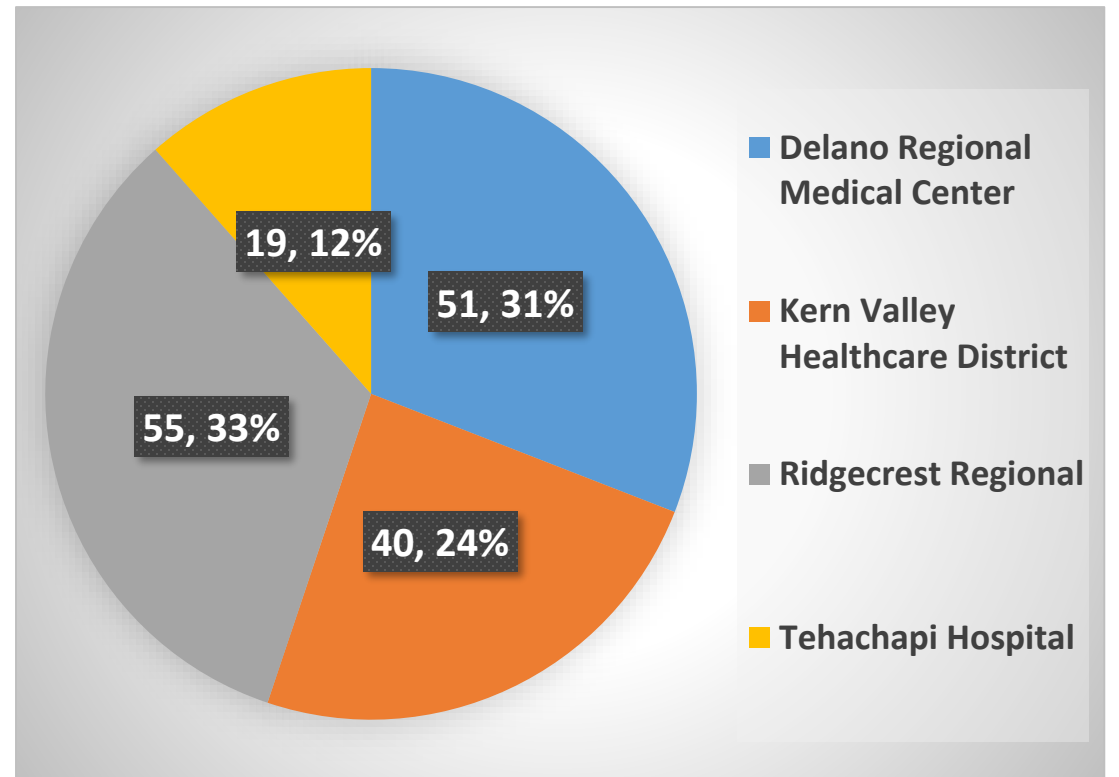


# Transport Volume by Hospital

## Week 1

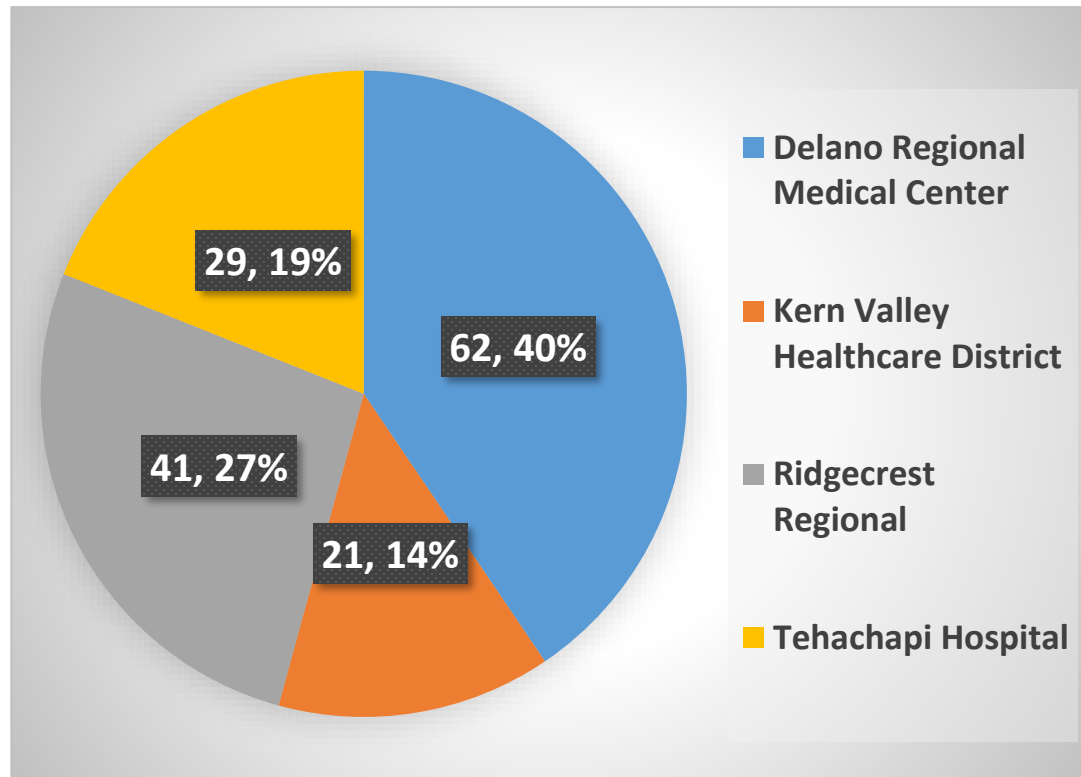


## Week 2



# Transport Volume by Hospital, Cont.

## Week 3



## Week 4

