

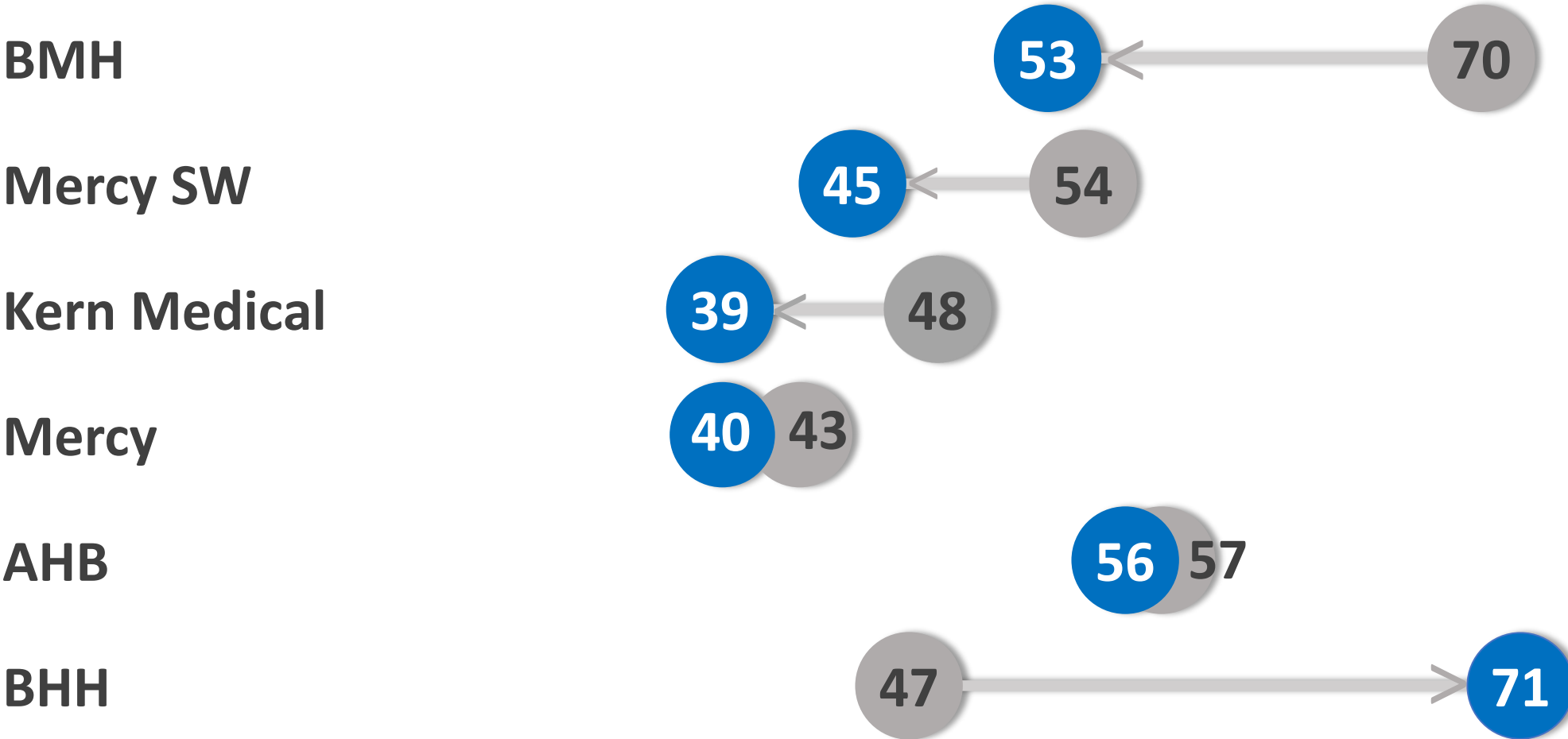
# APOT

September 2017-September 2018

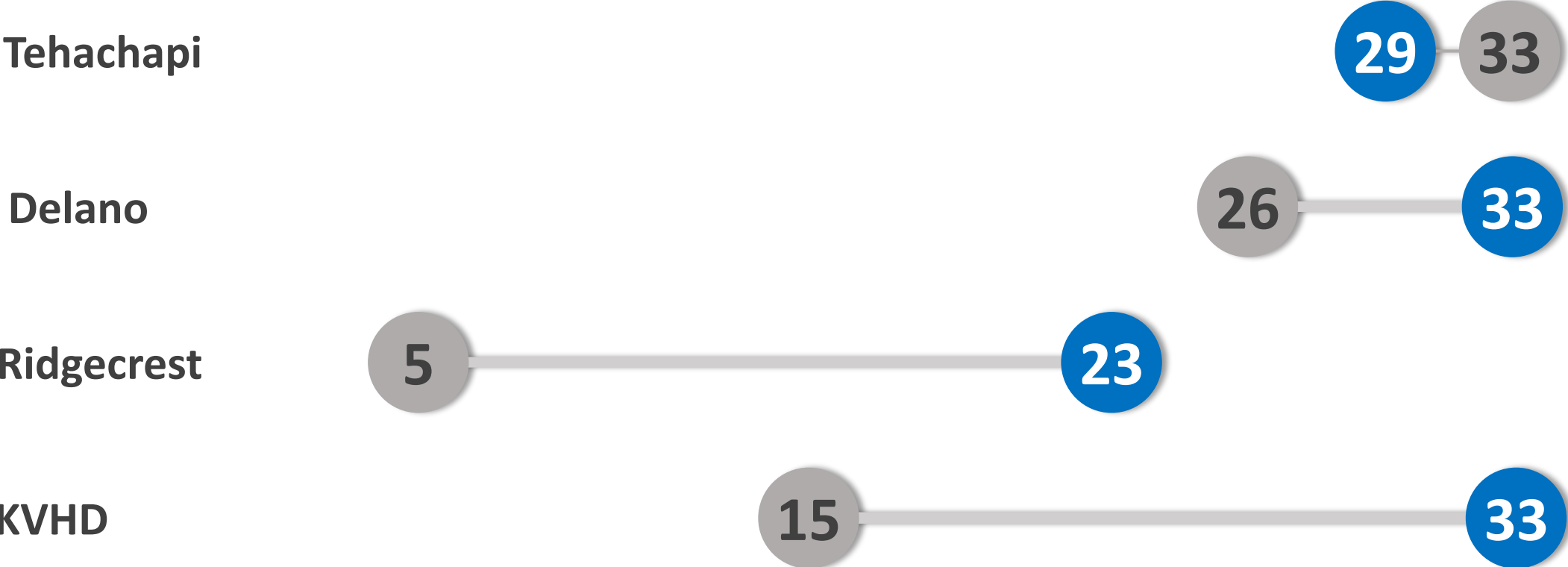
# APOT-1: September 2018

Rank	Hospital	Number of Transports	APOT-1 (Minutes)
1	Ridgecrest Regional	147	23
2	Tehachapi	106	29
3	Delano Regional	205	32.6
4	KVHD	123	32.7
5	Kern Medical	901	39
6	Mercy	476	40
7	Mercy SW	526	45
8	Bakersfield Memorial Hospital	1236	53
9	Adventist Health	1388	56
10	Bakersfield Heart Hospital	225	71

# Half of all Bakersfield hospitals saw improved APOT-1 from Sept 2017 to Sept 2018.



In contrast, APOT-1 worsened for the majority of outlying area hospitals from Sept 2017 and **Sept 2018**

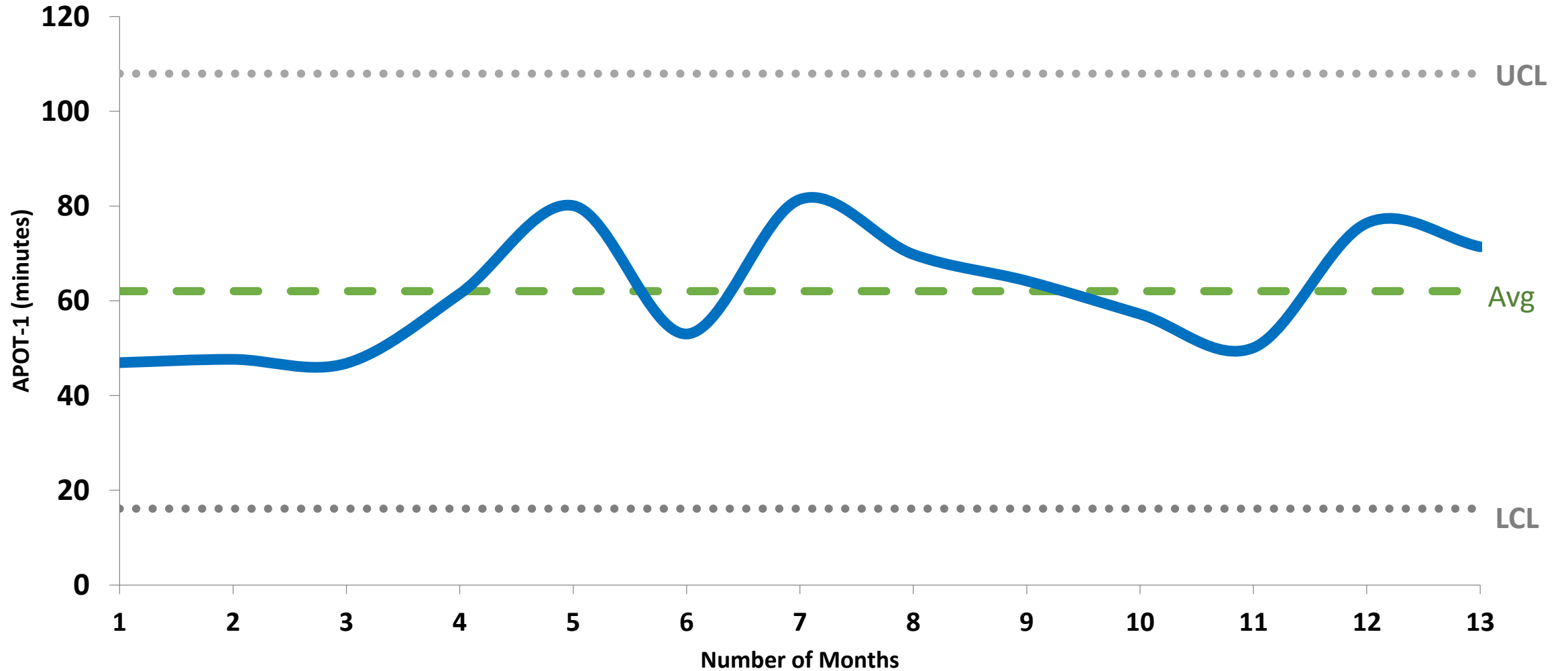


# Are these changes *REAL*?

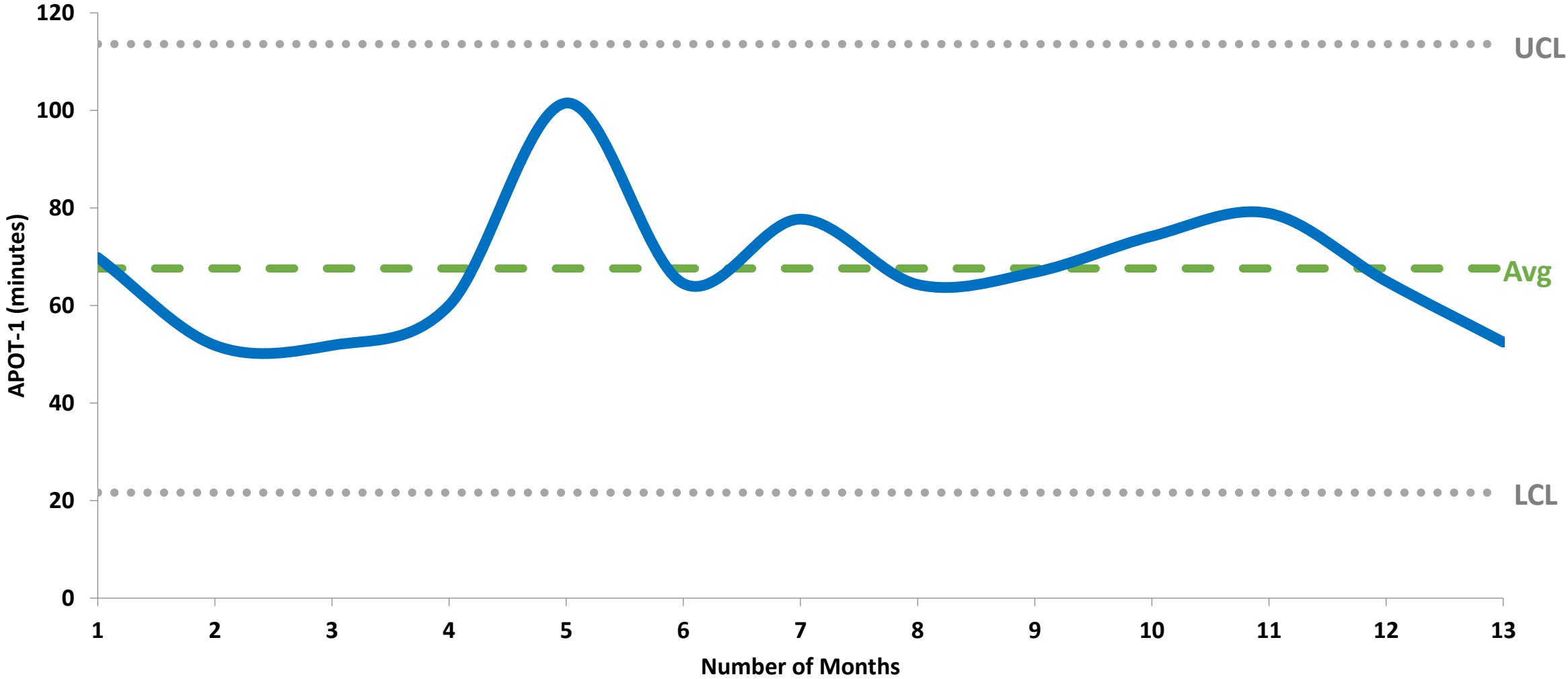
Control Charts

APOT-1: September 2017 through September 2018

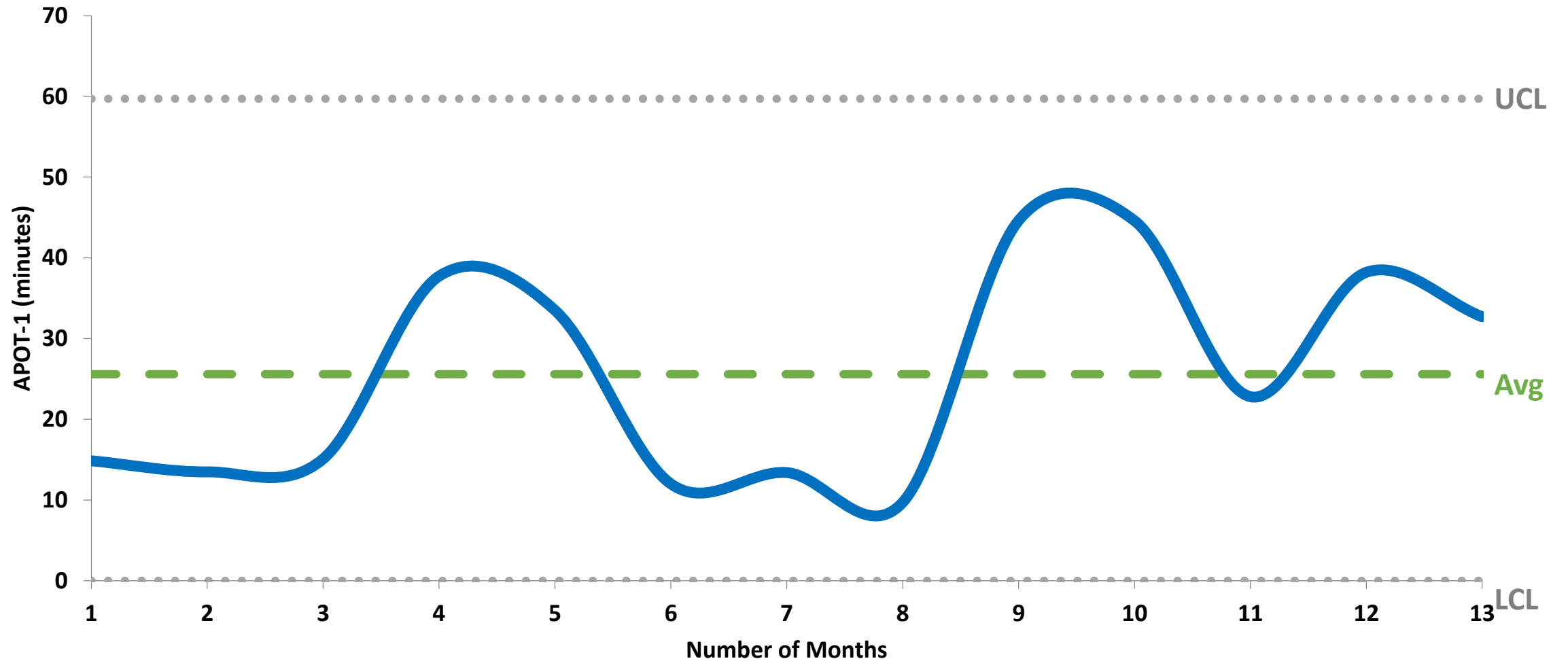
# Bakersfield Heart Hospital



# Bakersfield Memorial Hospital

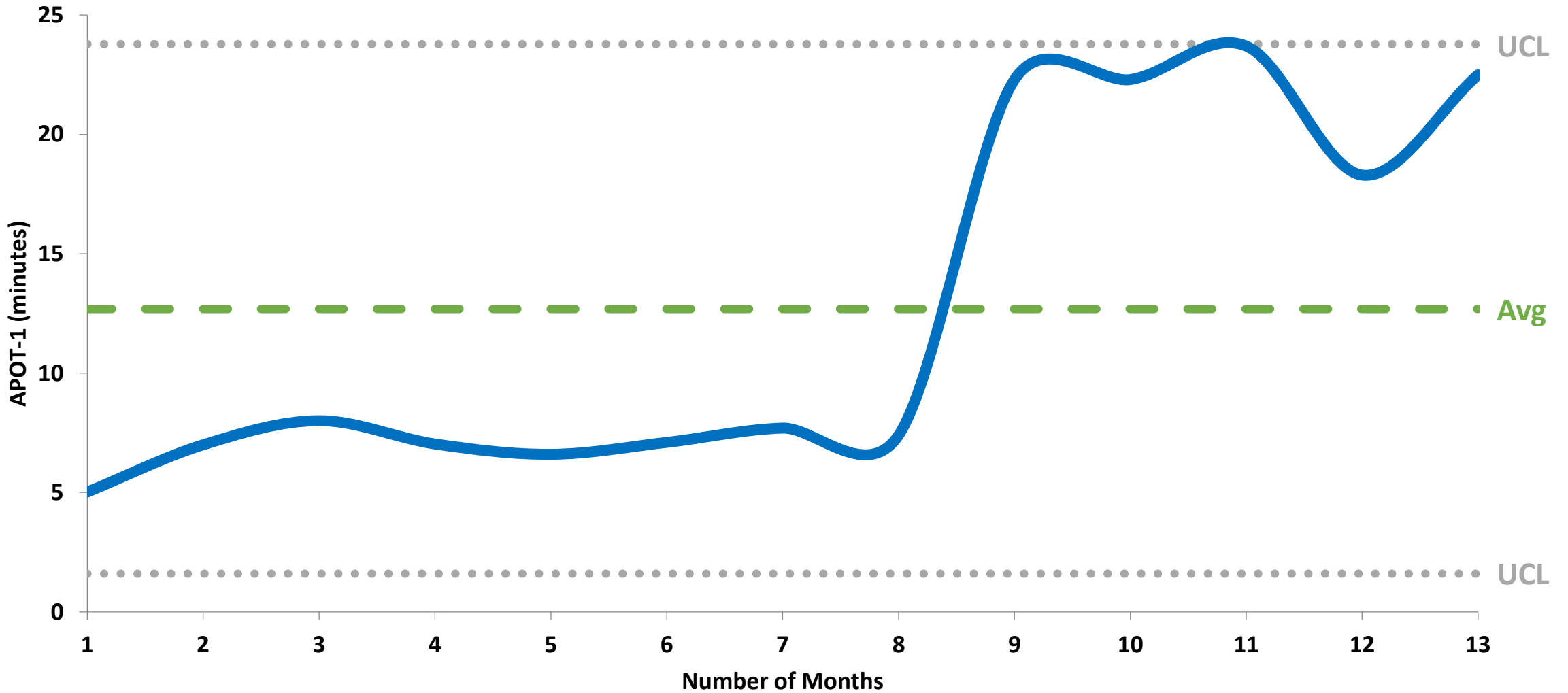


# Kern Valley Healthcare District





# Ridgecrest Regional



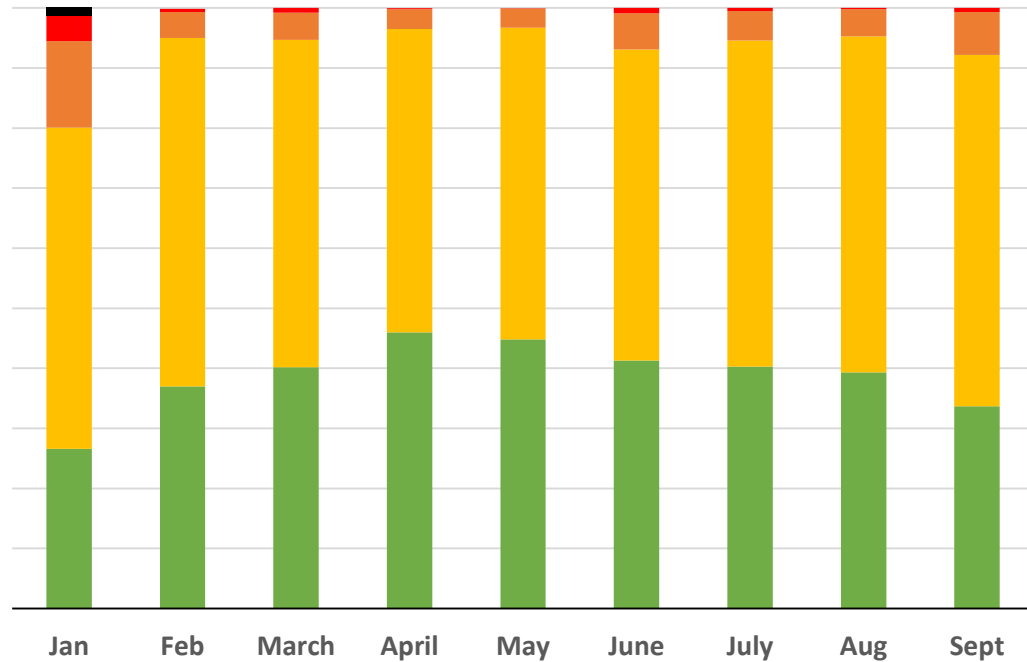
# APOT-2

Individual Hospital Data

# APOT-2: September 2018

Hospital	2.1 (N, %) (≤20 min)	2.2 (N, %) (21-60 min)	2.3 (N, %) (61-120 min)	2.4 (N, %) (121-180 min)	2.5 (N, %) (>180 min)	Total Number of Transports
Bakersfield Heart	83 (36.9)	108 (48)	29 (12.9)	3 (1.3)	2 (0.9)	225
Bakersfield Memorial	481 (38.9)	655 (53)	77 (6.2)	19 (1.5)	4 (0.3)	1236
Kern Medical	426 (47.3)	461 (51.2)	14 (1.6)	0 (0)	0 (0)	901
Adventist Health	468 (33.7)	812 (58.5)	99 (7.1)	9 (0.7)	0 (0)	1388
Mercy Southwest	251 (47.7)	259 (49.2)	15 (2.9)	1 (0.2)	0 (0)	526
Mercy	234 (50.5)	220 (47.5)	8 (1.7)	1 (0.2)	0 (0)	476
KVHD	75 (61)	47 (38.2)	1 (0.8)	0 (0)	0 (0)	123
Tehachapi	81 (76.4)	23 (21.7)	2 (1.9)	0 (0)	0 (0)	106
Delano	134 (65.4)	66 (32.2)	5 (2.4)	0(0)	0 (0)	205
Ridgecrest	129 (87.8)	17 (1.6)	1 (0.7)	0 (0)	0 (0)	147

# Want individual hospital data?



Contact information:

Margaret Mysz

[myszm@kerncounty.com](mailto:myszm@kerncounty.com)

661-868-0452

Extra Slides

# Transfer Times: Liberty Ambulance 2017-2018

