

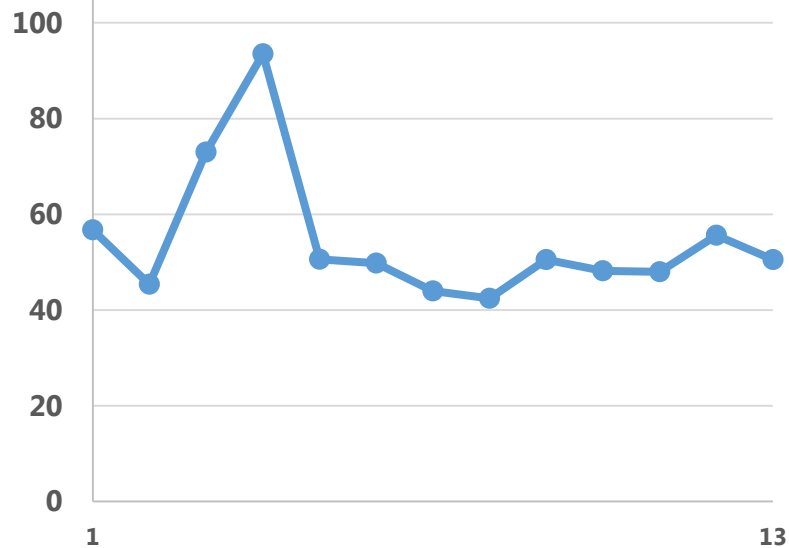
# APO<sup>T</sup>

October 2017-October 2018

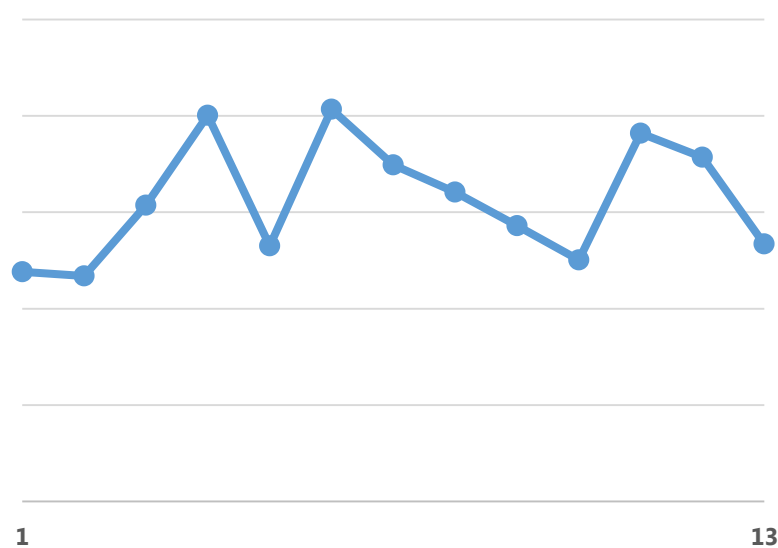
# APOT-1: October 2018

Rank	Hospital	Number of Transports	APOT-1 (Minutes)
1	Ridgecrest Regional	166	26.3
2	Delano Regional	213	29.3
3	Tehachapi	102	30.5
4	KVHD	109	33.4
5	Mercy Downtown	490	39.1
6	Kern Medical	888	40.7
7	Mercy SW	546	44.7
8	Adventist Health	1452	50.5
9	Bakersfield Memorial	1311	52.1
10	Bakersfield Heart	225	53.4

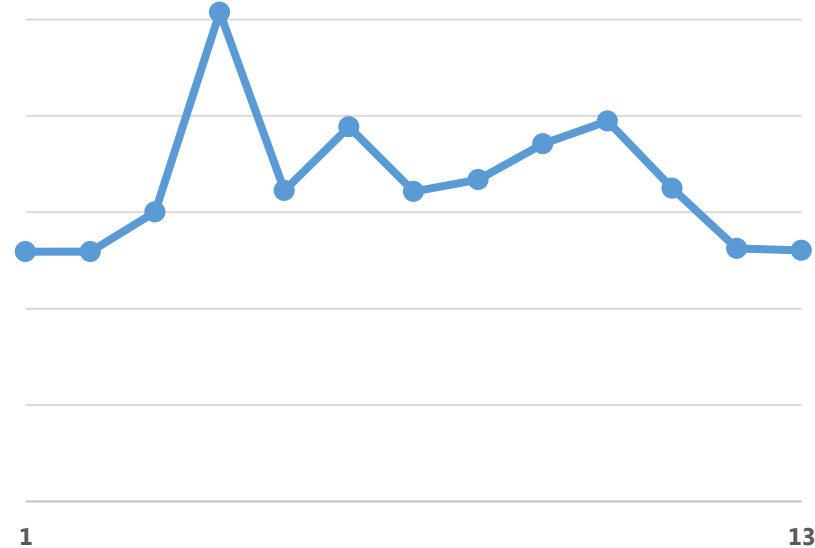
### Adventist Health



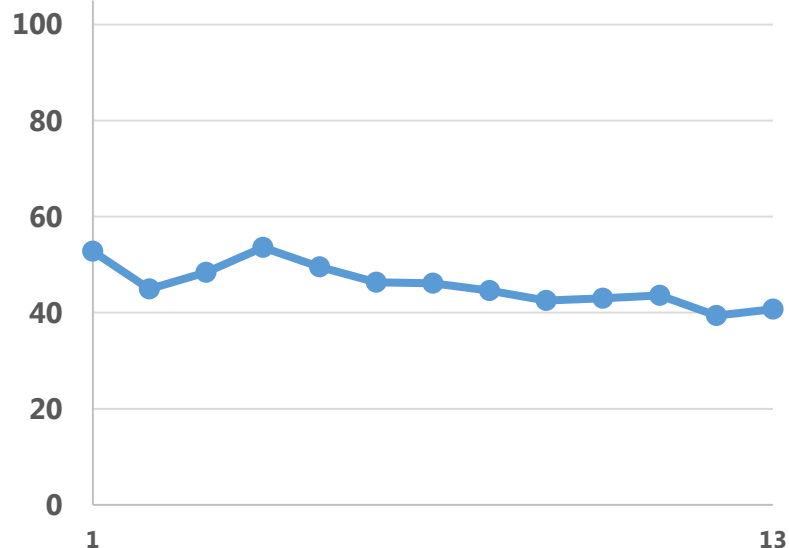
### Bakersfield Heart Hospital



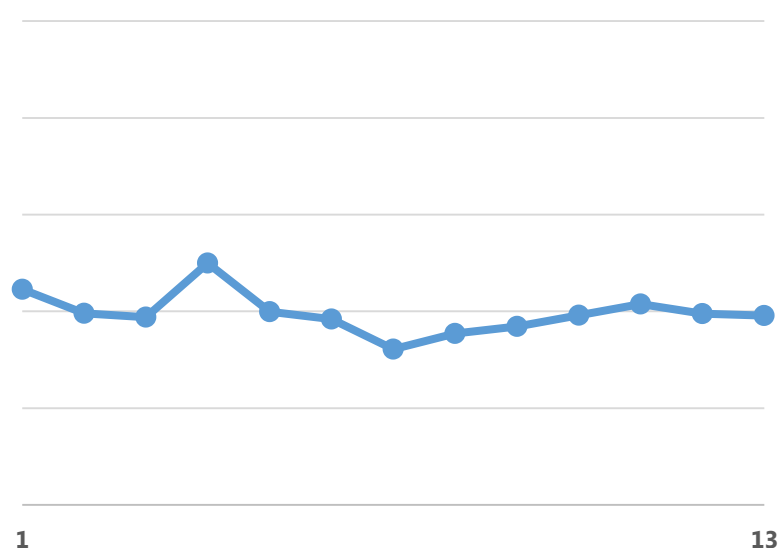
### Bakersfield Memorial Hospital



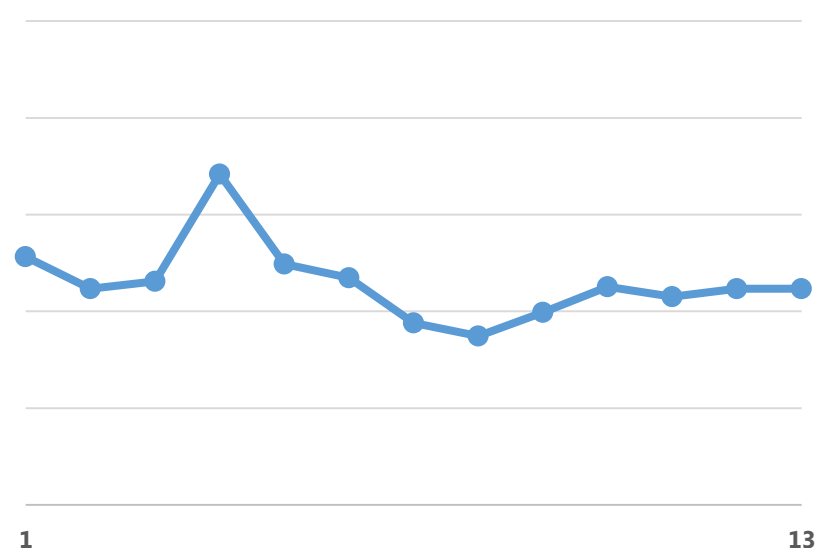
### Kern Medical



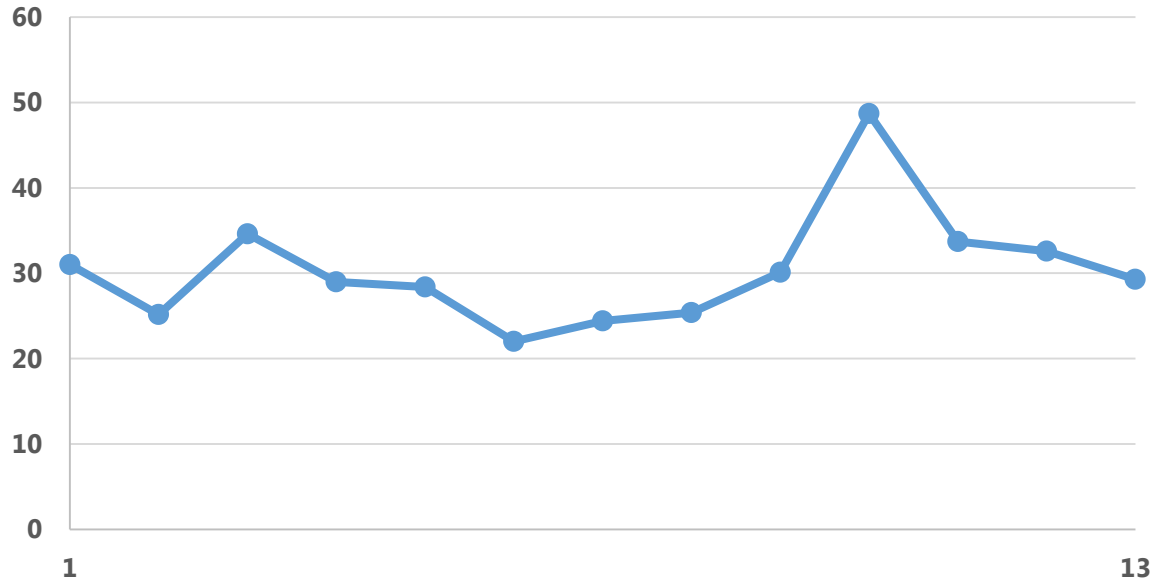
### Mercy Hospital



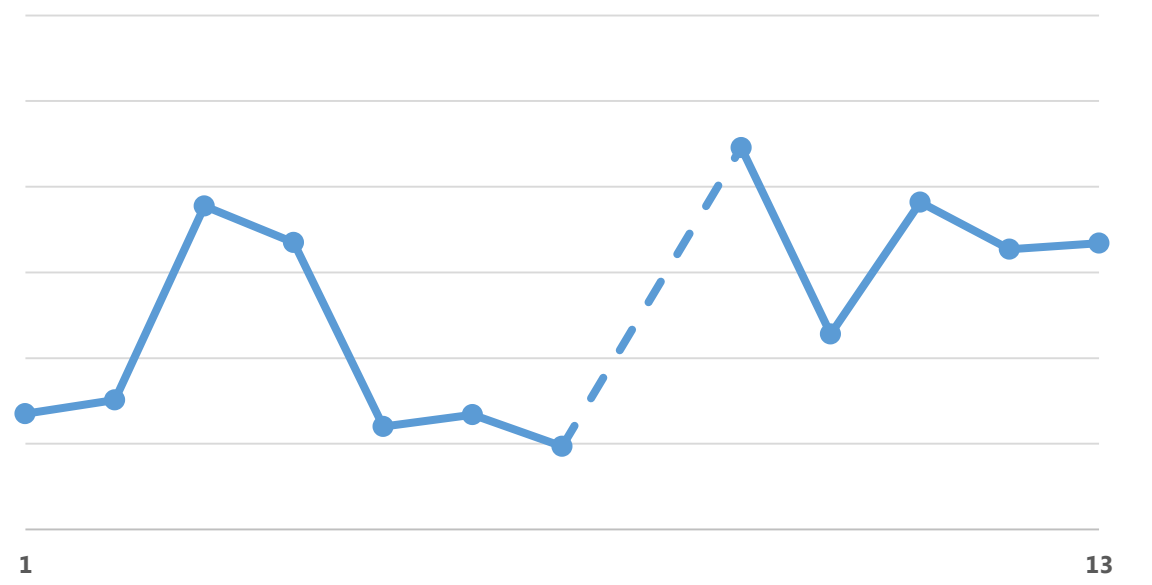
### Mercy Southwest Hospital



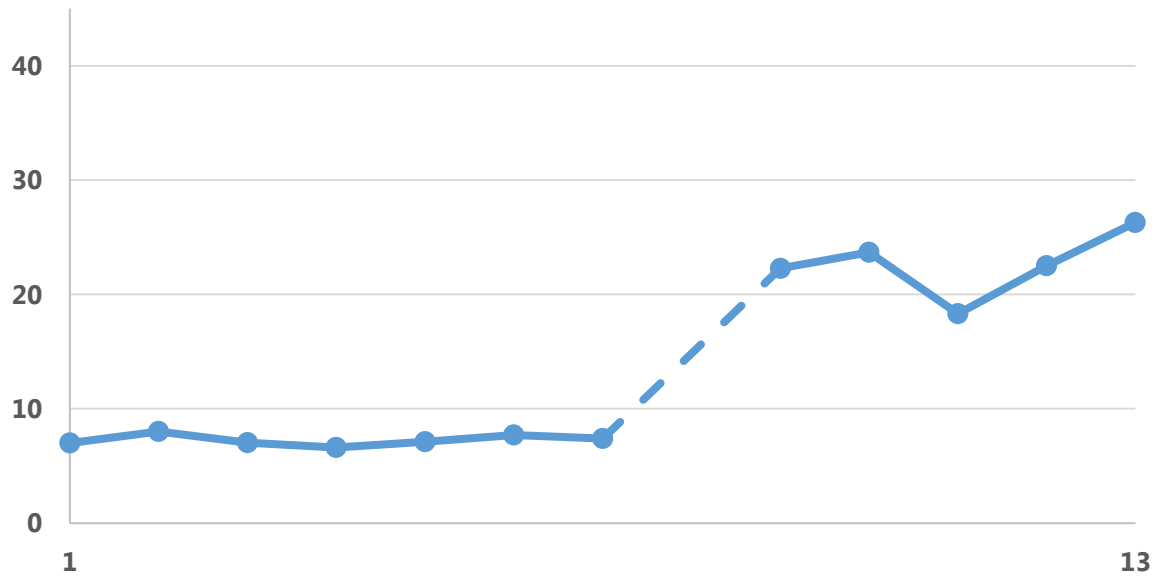
### Delano Regional Medical Center



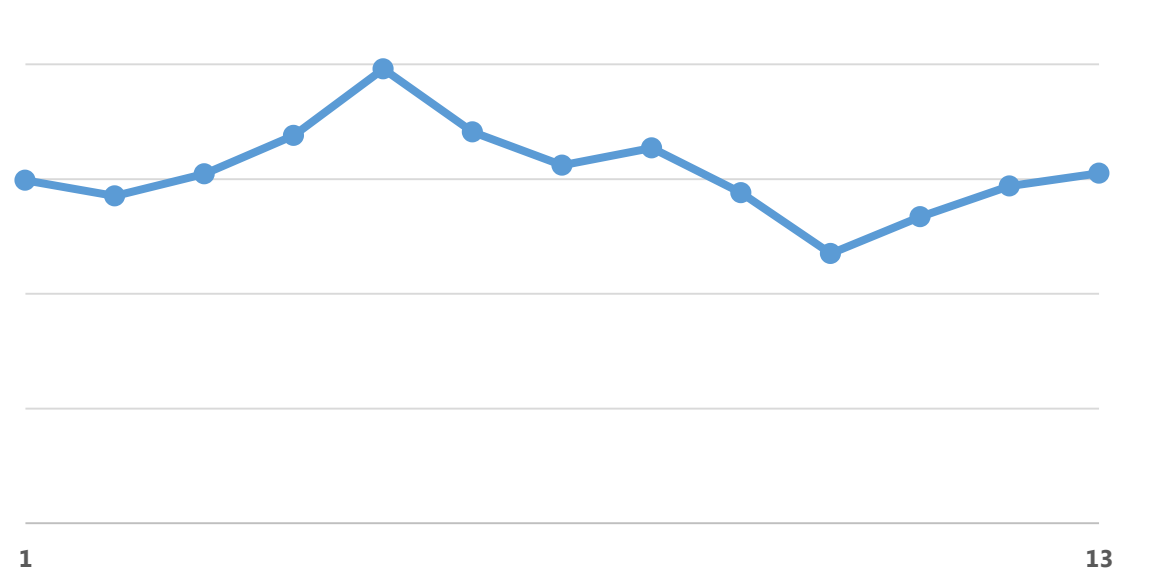
### Kern Valley Healthcare District



### Ridgecrest Regional



### Tehachapi Hospital



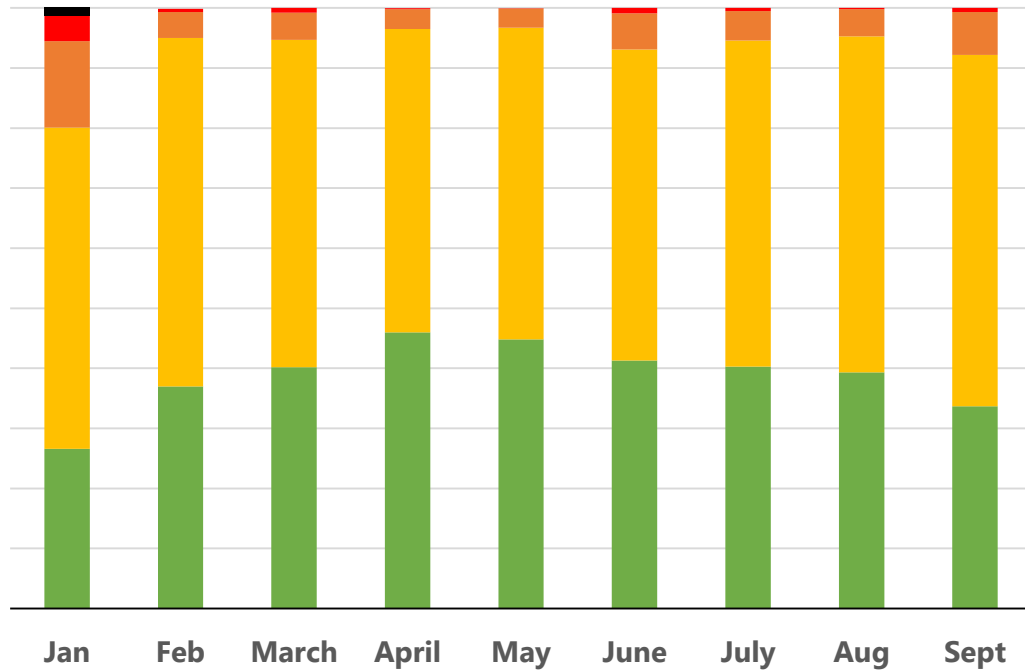
# APOT-2

Individual Hospital Data

# APOT-2: October 2018

<b>Hospital</b>	<b>2.1 (%) (≤20 min)</b>	<b>2.2 (%) (21-60 min)</b>	<b>2.3 (%) (61-120 min)</b>	<b>2.4 (%) (121-180 min)</b>	<b>2.5 (%) (&gt;180 min)</b>	<b>Total Number of Transports</b>
<b>Bakersfield Memorial</b>	<b>34.5%</b>	<b>58.7%</b>	<b>5.5%</b>	<b>0.9%</b>	<b>0.5%</b>	<b>1311</b>
<b>Adventist Health</b>	<b>34.6%</b>	<b>59%</b>	<b>5.6%</b>	<b>0.6%</b>	<b>0.2%</b>	<b>1452</b>
<b>Kern Medical</b>	<b>45.5%</b>	<b>52.3%</b>	<b>2.3%</b>	<b>0.0%</b>	<b>0.0%</b>	<b>888</b>
<b>Bakersfield Heart</b>	<b>36.4%</b>	<b>56.0%</b>	<b>7.1%</b>	<b>0.4%</b>	<b>0.0%</b>	<b>225</b>
<b>Mercy</b>	<b>49.0%</b>	<b>49.0%</b>	<b>2.1%</b>	<b>0.0%</b>	<b>0.0%</b>	<b>490</b>
<b>Mercy Southwest</b>	<b>49.8%</b>	<b>46.2%</b>	<b>4.0%</b>	<b>0.0%</b>	<b>0.0%</b>	<b>546</b>
<b>KVHD</b>	<b>62.4%</b>	<b>37.6%</b>	<b>0.0%</b>	<b>0.0%</b>	<b>0.0%</b>	<b>109</b>
<b>Tehachapi</b>	<b>70.6%</b>	<b>27.5%</b>	<b>2.0%</b>	<b>0.0%</b>	<b>0.0%</b>	<b>102</b>
<b>Delano</b>	<b>76.1%</b>	<b>22.1%</b>	<b>1.9%</b>	<b>0.0%</b>	<b>0.0%</b>	<b>213</b>
<b>Ridgecrest</b>	<b>88.0%</b>	<b>10.8%</b>	<b>1.2%</b>	<b>0.0%</b>	<b>0.0%</b>	<b>166</b>

# Want individual hospital data?



Contact information:  
Margaret Mysz  
[myszm@kerncounty.com](mailto:myszm@kerncounty.com)  
661-868-0452